

Peak Dot  *Ranch Ltd.*

**ANNUAL BLACK ANGUS
BULL AND FEMALE SALE**
Thursday, Dec. 6, 2007

At The Ranch, Wood Mountain, Saskatchewan



Peak Dot Predominant 115S - Lot 1



Peak Dot Predominant 124S - Lot 2



Peak Dot Prime Cut 150S - Lot 38

Welcome to Peak Dot Ranch...

Established in 1950...

PEAK DOT RANCH LTD.



Peak Dot Ranch Ltd.

Black Angus Bull and Female Sale

Thursday, Dec. 6, 2007

Sale starts at 1:00 p.m. C.S.T.

Selling...

84 Black Angus Two year old Bulls
155 Black Commercial Heifers bred to
Peak Dot Calving ease Bulls

SALE STAFF...

Steve Dorrان
Auctioneer
(403)226-2985

Bryon Wolters
Ring Man
(780)853-2781

Ryan Dorrان
Ring Man
(403)226-2985
cell....(403)507-6483

Dennis Ericson
Ring Man
(403)352-7630

Sale Consultant , Auctioneer
Roy Rutledge (Assiniboia Livestock Auction) (306) 642-4180

Sight Unseen Purchase Plan...

We would like you to attend the sale, but if you cannot, you can have Carson personally handle your purchase . Call him with your specification and discuss the offering, preferably a week before the sale. Carson gladly will assist you with your sale selections and represent you on sale day. We guarantee full satisfaction upon delivery or you don't own them.

Carson Moneo (306)266-4414

Sale Day Phone.....

(306)640-8717 (306)642-7415
(306)640-7257 (306)640-7651
(306)640-8760 (306)640-7497
(306)640-7498



TERMS AND CONDITIONS: Cattle will sell according to the terms and conditions of the Canadian Angus Association.
TERMS OF SALE: Cash and cheque, payable to the Clerk of the Sale on Sale Day. Release shall not be given unless satisfactory settlement has been made with the seller.
U.S. FUNDS: Shall be accepted at the Rate of Exchange current on Sale Day.
INSURANCE: An insurance representative will be present on Sale Day.
TRUCKING AND DELIVERY: Free delivery to central points on purebred purchases totalling \$2500.00 or more. Purchases of less than \$2500.00 will be delivered at cost.
ACCOMMODATIONS: BAR B INN Assiniboia (306)642-5555 Wheel Inn Motel Assiniboia (306)642-3308. Grasslands Inn, Mankota (306)478-2909 Parkside Inn Ponteix (306)625-3553 Limerick Hotel (306)263-2133
SALE ORDER: Cattle will sell in consecutive catalog order.
FOOD: Lunch begins at 11:30 a.m. C.S.T.
SALE LOCATION: Sale will be held at the Peak Dot Ranch sale barn, 3 1/2 miles south of Wood Mountain, Sk. 25 miles from the Montana border(West Poplar entry).
AIR TRAVEL: Air Strip at Assiniboia There will be transportation provided from Assiniboia.
Call us ahead for details and to arrange transportation.
Wintering Bulls: Peak Dot will winter bulls for two dollars a day. Bulls will be semen tested before delivery in spring.

The Moneo Family



Terry and Barbara



Carson, Lana, Koen and Riley



Clay, Shannon, Matt, Madison and Merit



Scott, Mia and Luke Turner

Welcome to the 2007 Fall Sale!

In an effort to meet the requests of our customers for sound, hard muscled breeding bulls in this sale we are offering bulls that have been raised from birth to weaning without creep. From weaning through the winter these animals were fed a high roughage growing ration. During the summer they ran on grass pastures. From October 1st until the sale these bulls are fed a high roughage ration in a large acreage to provide for plenty of exercise. These bulls will breed 30% to 40% more cows than yearling bulls and have been developed by Peak Dot to be fertile and sound.

We have also selected 100 cows out of our purebred herd which we are selling in groups of 25 by private treaty for breeding dates and more information contact Terry, Carson or Clay.

Again this year our customers are bringing in an excellent group of yearling heifers bred to Peak Dot calving ease bulls. Buyers from past sales are 100% satisfied with the quality of the females and the calving of the bulls. We offer free delivery on the purebred purchases totaling over \$2500 and can assist you with delivery on the commercial cattle or they can stay at the ranch until you arrange trucking.

Sincerely,
The Peak Dot Ranch Crew



Peak Dot Ranch Ltd.

ESTABLISHED IN 1950

Box 105, Wood Mountain, SK S0H 4L0
Terry Moneo Carson Moneo Clay Moneo Scott and Mia Turner
306-266-4303 306-266-4414 306-266-4411 306-266-2056
Fax 266-4930 Email: peakdot@sasktel.net

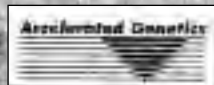
www.peakdotranch.com



"The cow-maker son of Traveler 004" Kelly Schaff



**34
SONS
SELL!**



Semen Package (20 straws for \$1500)
Phone (306) 266-4414 to Order

SAV 004 PREDOMINANT 4438

B.W.83lbs. 205 Day WT. 911lbs. Yearling WT. 1492lbs.

SITZ TRAVELER 8180
SAV 8180 TRAVELER 004
BOYD FOREVER LADY 8003
SAV 004 PREDOMINANT 4438
SAF 598 BANDO 5175
SAV EMBLYNETTE 1182
SAV EMBLYNETTE 7319

BW.....1+2.1
WW.....1+56
YW.....1+87
MILK.....1+25
SCROTAL.1+10



SAV 8180 TRAVELER 004

The breed's most popular performance sire earning EPDs for Weaning and Yearling Weight in the top 1% of all current sires. He consistently stamps his calves with length, thickness, muscle and pounds, along with an easy-fleshing, attractive appearance. He sired the world-record-selling sire group of bulls in the 2005 SAV and 2006 Sale, while his daughters are making beautiful brood cows with well-designed udders. Traveler 004 has shattered all semen sale records at Genex A.I. Stud to become the most widely used bull of his era selling over \$1000000 worth of semen in one year.

SAV 004 Predominant 4438 was selected by Peak Dot Ranch as the featured lot 2 bull in the record setting 2005 SAV sale. He is a massive, deep chested, big volume bull with abundant thickness, muscling and fleshing ability. Early indications are that he will be the cow-maker son of Traveler 004. His daughters are exceptionally deep and broody with the productive look of his Emblynette maternal lineage. His sons are masculine and muscular with moderate frame. SAV 004 Predominant 4438 was one of the most heavily used bulls at Schaff's in 2006 and promises a bright future.

THE DAM OF SAV 004 PREDOMINANT 4438



SAV EMBLYNETTE 1182

The productive dam of SAV 004 Predominant 4438 who records a weaning ratio of 113 on three calves and owns the eighth highest weaning EPD among all current dams of the angus breed.



SAV EMBLYNETTE 7319

This prolific Pathfinder cow is the grand dam of SAV 004 Predominant 4438, she records a weaning ratio of 110 on 5 calves.



PEAK DOT PREDOMINANT 115S LOT 1

1 PEAK DOT PREDOMINANT 115S

MALE PDAR 115S 1337720 March 06 2006

S A V 8180 TRAVELER 004 SITZ TRAVELER 8180
S A V 004 PREDOMINANT 4438 BOYD FOREVER LADY 8003
S A V EMBLYNETTE 1182 S A F 598 BANDO 5175
S A V EMBLYNETTE 7319
STEVENSON RAINMAKER D15K SITZ S LS RAINMAKER 7596
JESSICA OF PEAK DOT 744P STEVENSON LASS 523H
JESSICA OF PEAK DOT 755L DOUBLE AA RITO 287'97
JESSICA OF PEAK DOT 955H

BW: 81 lbs. Adj. 205D: 752 lbs. Adj. 365D: 1377 lbs
Y G: +28 BW: +3.1 WW: +45 YW: +73 Milk: +21 Mat: +44

As correct and and free moving as they come, Lot 1 is a near replica of his sire. He posted strong performance numbers across the board and come equipped with an excellent set of testicles.



PEAK DOT PREDOMINANT 124S LOT 2

2 PEAK DOT PREDOMINANT 124S

MALE PDAR 124S 1337637 March 11 2006

S A V 8180 TRAVELER 004 SITZ TRAVELER 8180
S A V 004 PREDOMINANT 4438 BOYD FOREVER LADY 8003
S A V EMBLYNETTE 1182 S A F 598 BANDO 5175
S A V EMBLYNETTE 7319
BASIN PRIME CUT 354K SUMMITCREST PRIME CUT 1G42
MIA OF PEAK DOT 283M BASIN HEIRESS 353
MIA OF PEAK DOT 316J MERIT 6105
MIA OF PEAK DOT 706G

BW: 82 lbs. Adj. 205D: 747 lbs. Adj. 365D: 1312 lbs
Y G: +26 BW: +2.4 WW: +41 YW: +67 Milk: +21 Mat: +42

A calving ease bull out of a well proven cow family. Dam Mia of Peak Dot 283M was one of the top selling lots in last years female sale. Granddam Mia of Peak Dot 316J and great granddam Mia of Peak Dot 706G both serve as embryo donors at Peak Dot.



PEAK DOT PREDOMINANT 664S LOT 3

3 PEAK DOT PREDOMINANT 664S

MALE (ET) PDAR 664S 1355731 March 15 2006

S A V 8180 TRAVELER 004 SITZ TRAVELER 8180
S A V 004 PREDOMINANT 4438 BOYD FOREVER LADY 8003
S A V EMBLYNETTE 1182 S A F 598 BANDO 5175
S A V EMBLYNETTE 7319
STEVENSON BRUNO 6371 STEVENSON BRUNO 561G
HEROINE OF PEAK DOT 721P STEVENSON QUEEN 828F
PEAK DOT HEROINE 246B PEAK DOT RANCHERO 405Y
WINDOVER HEROINE 13U

BW: 81 lbs. Adj. 205D: 762 lbs. Adj. 365D: 1300 lbs.
Y G: +30 BW: +2.4 WW: +42 YW: +71 Milk: +25 Mat: +46



HEROINE OF PEAK DOT 721P

Dam of Lot 3

A stout correct made bull blessed with natural thickness, compliments of the perfect mating of Predominant to Hobson. His dam Heroine of Peak Dot 721P is an Embryo donor a Peak Dot. Full brother is feature as lot 17.

Predominant Bulls...

Predominant Bulls...



PEAK DOT PREDOMINANT 108S LOT 4



PEAK DOT PREDOMINANT 142S LOT 6



PEAK DOT PREDOMINANT 107S LOT 5



PEAK DOT PREDOMINANT 98S LOT 7

QUEEN OF PEAK DOT 652S
flush sister to Lot 8



QUEEN OF PEAK DOT 653S
flush sister to Lot 8



PEAK DOT PREDOMINANT 656S LOT 8

A bull with excellent scrotal development and a gentle disposition. His two year old dam is one of the most impressive cows in the Peak Dot herd. His two flush sisters pictured to the left were features in the spring sale and were among the top selling lots.



PEAK DOT PREDOMINANT 138S LOT 9

A pair of Predominant sons that were born March 16, both bulls had 84lb birth weights, with yearling weights over 1300lbs. They are very similar to the stamp Predominant puts on all his progeny, with their proud fronts, excellent feet, full girths and wide tops.



PEAK DOT PREDOMINANT 139S LOT 11

4	PEAK DOT PREDOMINANT 108S
MALE	PDAR 108S 1337541 March 05 2006
S A V 8180 TRAVELER 004	SITZ TRAVELER 8180
S A V 004 PREDOMINANT 4438	BOYD FOREVER LADY 8003
S A V EMBLYNETTE 1182	S A F 598 BANDO 5175
	S A V EMBLYNETTE 7319
SCA 03H OF IDEAL 1418	IDEAL 1418 OF 8103 4286
ANNIE K OF PEAK DOT 550K	SCA 20E OF IDEAL 033 7258
ANNIE K OF PEAK DOT 966H	PEAK DOT STOCKMAN 12F
	CEDAR LADY 323E
BW: 82 lbs. Adj. 205D: 746 lbs. Adj. 365D: 1304 lbs	
YG: +30 BW: +3.3 WW: +45 YW: +75 Milk: +19 Mat: +42	

6	PEAK DOT PREDOMINANT 142S
MALE	PDAR 142S 1337678 March 16 2006
S A V 8180 TRAVELER 004	SITZ TRAVELER 8180
S A V 004 PREDOMINANT 4438	BOYD FOREVER LADY 8003
S A V EMBLYNETTE 1182	S A F 598 BANDO 5175
	S A V EMBLYNETTE 7319
PEAK DOT PANAMA 121G	O S U PANAMA 4178
DUCHESS OF PEAK DOT 552N	LADY OF PEAK DOT 346C
DUCHESS OF PEAK DOT 755G	O S U PANAMA 4178
	DUCHESS OF PEAK DOT 519E
BW: 80 lbs. Adj. 205D: 788 lbs. Adj. 365D: 1411 lbs.	
YG: +36 BW: +3.1 WW: +47 YW: +82 Milk: +20 Mat: +44	

8	PEAK DOT PREDOMINANT 656S
MALE (ET)	PDAR 656S 1355738 March 01 2006
S A V 8180 TRAVELER 004	SITZ TRAVELER 8180
S A V 004 PREDOMINANT 4438	BOYD FOREVER LADY 8003
S A V EMBLYNETTE 1182	S A F 598 BANDO 5175
	S A V EMBLYNETTE 7319
STEVENSON BRUNO 6371	STEVENSON BRUNO 561G
QUEEN OF PEAK DOT 806P	STEVENSON QUEEN 828F
PEAK DOT WONDER 304J	MERIT 6105
	CEDAR CREEK QUEEN 29G
BW: 86 lbs. Adj. 205D: 781 lbs. Adj. 365D: 1224 lbs.	
YG: +37 BW: +3.4 WW: +46 YW: +83 Milk: +26 Mat: +49	

10	PEAK DOT PREDOMINANT 101S
MALE	PDAR 101S 1337734 March 03 2006
S A V 8180 TRAVELER 004	SITZ TRAVELER 8180
S A V 004 PREDOMINANT 4438	BOYD FOREVER LADY 8003
S A V EMBLYNETTE 1182	S A F 598 BANDO 5175
	S A V EMBLYNETTE 7319
FCR MAGISTRATE 07L	CALEDONIAN BARDOLENE
MIA OF PEAK DOT 807P	BATSCHOL LADY 42U
MIA OF PEAK DOT 614K	PEAK DOT WALK-ON 51G
	MIA OF PEAK DOT 315C
BW: 80 lbs. Adj. 205D: 736 lbs. Adj. 365D: 1293 lbs.	
YG: +25 BW: +2.7 WW: +38 YW: +63 Milk: +18 Mat: +37	

5	PEAK DOT PREDOMINANT 107S
MALE	PDAR 107S 1337397 March 05 2006
S A V 8180 TRAVELER 004	SITZ TRAVELER 8180
S A V 004 PREDOMINANT 4438	BOYD FOREVER LADY 8003
S A V EMBLYNETTE 1182	S A F 598 BANDO 5175
	S A V EMBLYNETTE 7319
CANADIAN LUMBERJACK	HARRISON
MIA OF PEAK DOT 214B	LADY OF PEAK DOT 190R
MIA OF PEAK DOT 230X	S V F RANCHERO
	MIA OF PEAK DOT 205R
BW: 87 lbs. Adj. 205D: 753 lbs. Adj. 365D: 1234 lbs.	
YG: +14 BW: +3.0 WW: +41 YW: +55 Milk: +18 Mat: +39	

7	PEAK DOT PREDOMINANT 98S
MALE	PDAR 98S 1337484 March 01 2006
S A V 8180 TRAVELER 004	SITZ TRAVELER 8180
S A V 004 PREDOMINANT 4438	BOYD FOREVER LADY 8003
S A V EMBLYNETTE 1182	S A F 598 BANDO 5175
	S A V EMBLYNETTE 7319
PEAK DOT STOCKMAN 12F	2TM STOCKMANS OSCAR 210
LADY OF PEAK DOT 324J	PRINCESS OF PEAK DOT 209B
LADY OF PEAK DOT 473D	TURBULENCE 167 A O
	PEAK DOT LADY 48J
BW: 90 lbs. Adj. 205D: 719 lbs. Adj. 365D: 1238 lbs.	
YG: +18 BW: +3.7 WW: +39 YW: +58 Milk: +15 Mat: +35	

9	PEAK DOT PREDOMINANT 138S
MALE	PDAR 138S 1337616 March 16 2006
S A V 8180 TRAVELER 004	SITZ TRAVELER 8180
S A V 004 PREDOMINANT 4438	BOYD FOREVER LADY 8003
S A V EMBLYNETTE 1182	S A F 598 BANDO 5175
	S A V EMBLYNETTE 7319
HF MOST WANTED 46H	HF WALKER 107E
DUCHESS OF PEAK DOT 874L	HFRF ROSEBUD 72F
DUCHESS OF PEAK DOT 762G	HF WALK-ON 14C
	DUCHESS OF PEAK DOT 354C
BW: 84 lbs. Adj. 205D: 805 lbs. 4Adj. 365D: 1323 lbs	
YG: +24 BW: +2.7 WW: +47 YW: +71 Milk: +22 Mat: +46	

11	PEAK DOT PREDOMINANT 139S
MALE	PDAR 139S 1337406 March 16 2006
S A V 8180 TRAVELER 004	SITZ TRAVELER 8180
S A V 004 PREDOMINANT 4438	BOYD FOREVER LADY 8003
S A V EMBLYNETTE 1182	S A F 598 BANDO 5175
	S A V EMBLYNETTE 7319
ADMIN INDY OF TWO M 3X	BATSCHOL LAD 9U
LADY OF PEAK DOT 365C	FANCY LADY ANN OF TWO M 9'86
LADY OF PEAK DOT 132A	ADMIN INDY OF TWO M 3X
	LADY OF PEAK DOT 95P
BW: 84 lbs. Adj. 205D: 730 lbs. Adj. 365D: 1305 lbs.	
YG: +24 BW: +2.8 WW: +38 YW: +62 Milk: +21 Mat: +40	

Predominant Bulls...

Predominant Bulls...



PEAK DOT PREDOMINANT 661S LOT 17

A long fronted Predominant son with a powerful hip that is sure to add some stretch and pounds to his calves. His Hobson dam is an embryo donor that is solid black with an excellent udder. His flush sister, Heroine of Peak Dot 666S was featured in the spring sale and his flush brother sells as lot 3.



HEROINE OF PEAK DOT 666S
flush sister to Lot 17



HEROINE OF PEAK DOT 721P
Dam of Lot 17

12 PEAK DOT PREDOMINANT 166S

MALE PDAR 166S 1337622 March 30 2006
 S A V 8180 TRAVELER 004 SITZ TRAVELER 8180
S A V 004 PREDOMINANT 4438 BOYD FOREVER LADY 8003
 S A F 598 BANDO 5175
 S A V EMBLYNETTE 1182 S A V EMBLYNETTE 7319
 S A R FAME 2089 S A F FAME
PRUDINA OF PEAK DOT 239M THREE TREES SKYMERE 57X7
 PRUDINA OF PEAK DOT 624F 2TM STOCKMANS OSCAR 210
 LADY OF PEAK DOT 203B
 BW: 85 lbs. Adj. 205D: 754 lbs. Adj. 365D: 1349 lbs.
 YG: +29 BW: +2.7 WW: +43 YW: +72 Milk: +19 Mat: +41

15 PEAK DOT PREDOMINANT 145S

MALE PDAR 145S 1337722 March 17 2006
 S A V 8180 TRAVELER 004 SITZ TRAVELER 8180
S A V 004 PREDOMINANT 4438 BOYD FOREVER LADY 8003
 S A F 598 BANDO 5175
 S A V EMBLYNETTE 1182 S A V EMBLYNETTE 7319
 BASIN PRIME CUT 354K SUMMITCREST PRIMECUT 1G42
PANSY OF PEAK DOT 761P BASIN HEIRESS 353
 PANSY OF PEAK DOT 443D TURBULENCE 167 A O
 PANSY OF PEAK DOT 350Y
 BW: 80 lbs. Adj. 205D: 767 lbs. Adj. 365D: 1356 lbs.
 YG: +28 BW: +2.9 WW: +42 YW: +70 Milk: +22 Mat: +43

13 PEAK DOT PREDOMINANT 119S

MALE PDAR 119S 1337633 March 07 2006
 S A V 8180 TRAVELER 004 SITZ TRAVELER 8180
S A V 004 PREDOMINANT 4438 BOYD FOREVER LADY 8003
 S A F 598 BANDO 5175
 S A V EMBLYNETTE 1182 S A V EMBLYNETTE 7319
 S A R NEW TREND 4100 2080 F NEW TREND 4100
LADY OF PEAK DOT 276M CHAMPION HILL POCAHONTAS
 LADY OF PEAK DOT 566K PEAKDOT GENERAL STONE 13F
 LADY OF PEAK DOT 575E
 BW: 81 lbs. Adj. 205D: 727 lbs. Adj. 365D: 1280 lbs.
 YG: +30 BW: +3.3 WW: +43 YW: +73 Milk: +20 Mat: +42

16 PEAK DOT PREDOMINANT 136S

MALE PDAR 136S 1337703 March 15 2006
 S A V 8180 TRAVELER 004 SITZ TRAVELER 8180
S A V 004 PREDOMINANT 4438 BOYD FOREVER LADY 8003
 S A F 598 BANDO 5175
 S A V EMBLYNETTE 1182 S A V EMBLYNETTE 7319
 HF MOST WANTED 46H HF WALKER 107E
BARDOLIA OF PEAK DOT 651N HFRF ROSEBUD 72F
 BARDOLIA OF PEAK DOT 526E HF WALK-ON 14C
 LADY OF PEAK DOT 281R
 BW: 78 lbs. Adj. 205D: 740 lbs. Adj. 365D: 1295 lbs.
 YG: +24 BW: +2.2 WW: +41 YW: +65 Milk: +20 Mat: +41

14 PEAK DOT PREDOMINANT 254S

MALE (ET) PDAR 254S 1355729 March 12 2006
 S A V 8180 TRAVELER 004 SITZ TRAVELER 8180
S A V 004 PREDOMINANT 4438 BOYD FOREVER LADY 8003
 S A F 598 BANDO 5175
 S A V EMBLYNETTE 1182 S A V EMBLYNETTE 7319
 STEVENSON BRUNO 6371 STEVENSON BRUNO 561G
PRINCESS OF PEAK DOT 748P STEVENSON QUEEN 828F
 CEDAR CREEK LADY 341G CHAMPIONHILL GENERAL STONE
 CEDAR CREEK PRINCESS 340Z
 BW: 94 lbs. Adj. 205D: 704 lbs. Adj. 365D: 1244 lbs.
 YG: +36 BW: +3.4 WW: +44 YW: +82 Milk: +26 Mat: +41

17 PEAK DOT PREDOMINANT 661S

MALE (ET) PDAR 661S 1355731 March 15 2006
 S A V 8180 TRAVELER 004 SITZ TRAVELER 8180
S A V 004 PREDOMINANT 4438 BOYD FOREVER LADY 8003
 S A F 598 BANDO 5175
 S A V EMBLYNETTE 1182 S A V EMBLYNETTE 7319
 STEVENSON BRUNO 6371 STEVENSON BRUNO 561G
HEROINE OF PEAK DOT 721P STEVENSON QUEEN 828F
 PEAK DOT HEROINE 246B PEAK DOT RANCHERO 405Y
 WINDOVER HEROINE 13U
 BW: 84 lbs. Adj. 205D: 764 lbs. Adj. 365D: 1336 lbs.
 YG: +30 BW: +2.4 WW: +42 YW: +71 Milk: +25 Mat: +46

18 PEAK DOT PREDOMINANT 121S

MALE PDAR 121S 1337460 March 09 2006
 S A V 8180 TRAVELER 004 SITZ TRAVELER 8180
S A V 004 PREDOMINANT 4438 BOYD FOREVER LADY 8003
 S A F 598 BANDO 5175
 S A V EMBLYNETTE 1182 S A V EMBLYNETTE 7319
 CHAMPION HILL GENERAL STONE CENTURY TOUCHSTONE 131
MIA OF PEAK DOT 905H R&J LADY 1427
 MIA OF PEAK DOT 539E HF WALK-ON 14C
 MIA OF PEAK DOT 604Z
 BW: 83 lbs. Adj. 205D: 705 lbs. Adj. 365D: 1206 lbs.
 YG: +25 BW: +3.2 WW: +39 YW: +63 Milk: +20 Mat: +40



PEAK DOT PREDOMINANT 121S LOT 18

19 PEAK DOT PREDOMINANT 131S

MALE PDAR 131S 1337576 March 14 2006
 S A V 8180 TRAVELER 004 SITZ TRAVELER 8180
S A V 004 PREDOMINANT 4438 BOYD FOREVER LADY 8003
 S A F 598 BANDO 5175
 S A V EMBLYNETTE 1182 S A V EMBLYNETTE 7319
 LOMA LANES CRACKER JACK 51 LOMA LANES CRACKER JACK 4F
DOUBLE AA ANNIE K 679'01 DURNESS KATHLEEN 1W
 SHALICA ANNIE K 259 97 DOUBLE AA BANDY 71'95
 DOUBLE AA ANNIE K 586'95
 BW: 83 lbs. Adj. 205D: 717 lbs. Adj. 365D: 1225 lbs.
 YG: +18 BW: +2.8 WW: +40 YW: +58 Milk: +14 Mat: +34



QUEEN OF PEAK DOT 710P Dam of Lot 21

20 PEAK DOT PREDOMINANT 149S

MALE PDAR 149S 1337661 March 20 2006
 S A V 8180 TRAVELER 004 SITZ TRAVELER 8180
S A V 004 PREDOMINANT 4438 BOYD FOREVER LADY 8003
 S A F 598 BANDO 5175
 S A V EMBLYNETTE 1182 S A V EMBLYNETTE 7319
 BASIN PRIME CUT 354K SUMMITCREST PRIME CUT 1G42
BARBARA OF PEAK DOT 455N BASIN HEIRESS 353
 BARBARA OF PEAK DOT 502K SCA 03H OF IDEAL 1418
 BARBARA OF PEAK DOT 941H
 BW: 78 lbs. Adj. 205D: 730 lbs. Adj. 365D: 1304 lbs.
 YG: +26 BW: +2.4 WW: +46 YW: +71 Milk: +20 Mat: +43



QUEEN OF PEAK DOT 650S
flush sister to Lot 21

21 PEAK DOT PREDOMINANT 659S

MALE (ET) PDAR 659S 1355723 March 05 2006
 S A V 8180 TRAVELER 004 SITZ TRAVELER 8180
S A V 004 PREDOMINANT 4438 BOYD FOREVER LADY 8003
 S A F 598 BANDO 5175
 S A V EMBLYNETTE 1182 S A V EMBLYNETTE 7319
 STEVENSON BRUNO 6371 STEVENSON BRUNO 561G
QUEEN OF PEAK DOT 710P STEVENSON QUEEN 828F
 QUEEN OF PEAK DOT 705G CHAMPION HILL GENERAL STONE
 QUEEN OF PEAK DOT 434D
 BW: 77 lbs. Adj. 205D: 785 lbs. Adj. 365D: 1274 lbs.
 YG: +36 BW: +3.4 WW: +44 YW: +80 Milk: +25 Mat: +47

QUEEN OF PEAK DOT 663S
flush sister to Lot 21



QUEEN OF PEAK DOT 657S
flush sister to Lot 21

A premier calving ease bull by Predominant out of a full bodied fancy Saugahatchee cow. Dam Duchess of Peak Dot 654N is an embryo donor at Peak Dot.



PEAK DOT PREDOMINANT 660S LOT 22



22 PEAK DOT PREDOMINANT 660S
 MALE (ET) PDAR 660S 1355728 March 09 2006
 S A V 8180 TRAVELER 004 SITZ TRAVELER 8180
S A V 004 PREDOMINANT 4438 BOYD FOREVER LADY 8003
 S A V EMBLYNETTE 1182 S A F 598 BANDO 5175
 S A V EMBLYNETTE 7319
 S A V SAUGAHATCHEE 9374 SAUGAHATCHEE 3000C
DUCHESS OF PEAK DOT 654N S A V DOMINIQUE 5003
 DUCHESS OF PEAK DOT 554K PEAK DOT PANAMA 121G
 DUCHESS OF PEAK DOT 948H
 BW: 88 lbs. Adj. 205D: 709 lbs. Adj. 365D: 1260 lbs.
 YG+37: BW:+3.4 WW:+46 YW:+83 Milk:+25 Mat+49

23 PEAK DOT PREDOMINANT 120S
 MALE PDAR 120S 1337410 March 08 2006
 S A V 8180 TRAVELER 004 SITZ TRAVELER 8180
S A V 004 PREDOMINANT 4438 BOYD FOREVER LADY 8003
 S A V EMBLYNETTE 1182 S A F 598 BANDO 5175
 S A V EMBLYNETTE 7319
 FREYS EXTRA PROFIT G M A R EXTRA PROFIT X081
BARBARA OF PEAK DOT 409D F A R KINANNIE 12T
 BARBARA OF PEAK DOT 130A ADMIN INDY OF TWO M 3X
 BARBARA OF PEAK DOT 85N
 BW: 85 lbs. Adj. 205D: 722 lbs. Adj. 365D: 1262 lbs.
 Y G: +22 BW: +3.1 WW: +34 YW: +56 Milk: +18 Mat: +35

26 PEAK DOT PREDOMINANT 122S
 MALE PDAR 122S 1337686 March 09 2006
 S A V 8180 TRAVELER 004 SITZ TRAVELER 8180
S A V 004 PREDOMINANT 4438 BOYD FOREVER LADY 8003
 S A V EMBLYNETTE 1182 S A F 598 BANDO 5175
 S A V EMBLYNETTE 7319
 STEVENSON V AMBUSH 5430 VDAR AMBUSH 2478
PRINCESS OF PEAK DOT 575N STEVENSON RUBY 280E
 PRINCESS OF PEAK DOT 577K SCA 03H OF IDEAL 1418
 PRINCESS OF PEAK DOT 504E
 BW: 84 lbs. Adj. 205D: 733 lbs. Adj. 365D: 1397 lbs.
 Y G: +42 BW: +3.3 WW: +46 YW: +88 Milk: +20 Mat: +43

29 PEAK DOT PREDOMINANT 91S
 MALE PDAR 91S 1337667 February 28 2006
 S A V 8180 TRAVELER 004 SITZ TRAVELER 8180
S A V 004 PREDOMINANT 4438 BOYD FOREVER LADY 8003
 S A V EMBLYNETTE 1182 S A F 598 BANDO 5175
 S A V EMBLYNETTE 7319
 BASIN PRIME CUT 354K SUMMITCREST PRIME CUT 1G42
LADY OF PEAK DOT 472N BASIN HEIRESS 353
 LADY OF PEAK DOT 520E HF WALK-ON 14C
 LADY OF PEAK DOT 631Z
 BW: 82 lbs. Adj. 205D: 798 lbs. Adj. 365D: 1289 lbs.
 YG: +20 BW: +2.8 WW: +46 YW: +66 Milk: +23 Mat: +46

32 PEAK DOT PREDOMINANT 144S
 MALE PDAR 144S NO PAPER March 16 2006
 S A V 8180 TRAVELER 004 SITZ TRAVELER 8180
S A V 004 PREDOMINANT 4438 BOYD FOREVER LADY 8003
 S A V EMBLYNETTE 1182 S A F 598 BANDO 5175
 S A V EMBLYNETTE 7319
 FCR MAGISTRATE 07L CALEDONIAN EXECUTIVE BARDOLE
LADY OF PEAK DOT 820P BATSCHOL LADY 42U
 LADY OF PEAK DOT 832L PEAK DOT GENERAL STONE 13F
 LADY OF PEAK DOT 365C
 BW: 65 lbs. Adj. 205D: 712 lbs. Adj. 365D: 1304 lbs.
 Y G: +27 BW: +0.8 WW: +39 YW: +66 Milk: +16 Mat: +36

24 PEAK DOT PREDOMINANT 113S
 MALE PDAR 113S 1337558 March 06 2006
 S A V 8180 TRAVELER 004 SITZ TRAVELER 8180
S A V 004 PREDOMINANT 4438 BOYD FOREVER LADY 8003
 S A V EMBLYNETTE 1182 S A F 598 BANDO 5175
 S A V EMBLYNETTE 7319
 DOUBLE AA BARDOLENE 22'92 GEIS BARDOLENE 28'92
DOUBLE AA ANNIE K 569'01 DOUBLE AA ANNIE K 543'92
 DOUBLE AA ANNIE K 72'97 DOUBLE AA RETO 554'93
 DOUBLE AA ANNIE K 532'86
 BW: 82 lbs. Adj. 205D: 756 lbs. Adj. 365D: 1250 lbs.
 YG: +15 BW: +1.8 WW: +36 YW: +51 Milk: +18 Mat: +36

27 PEAK DOT PREDOMINANT 137S
 MALE PDAR 137S 1364570 March 15 2006
 S A V 8180 TRAVELER 004 SITZ TRAVELER 8180
S A V 004 PREDOMINANT 4438 BOYD FOREVER LADY 8003
 S A V EMBLYNETTE 1182 S A F 598 BANDO 5175
 S A V EMBLYNETTE 7319
 FREYS EXTRA PROFIT G M A R EXTRA PROFIT X081
CEDAR CREEK 81F F A R KINANNIE 12T
 MIA OF PEAK DOT 24W WALDECK SHOCKER
 MIA OF PEAK DOT 91L
 BW: 84 lbs. Adj. 205D: 701 lbs. Adj. 365D: 1218 lbs.
 YG+20 BW:+3.3 WW:+41 YW:+60 Milk:+16 Mat:+36

30 PEAK DOT PREDOMINANT 111S
 MALE PDAR 111S 1337451 March 05 2006
 S A V 8180 TRAVELER 004 SITZ TRAVELER 8180
S A V 004 PREDOMINANT 4438 BOYD FOREVER LADY 8003
 S A V EMBLYNETTE 1182 S A F 598 BANDO 5175
 S A V EMBLYNETTE 7319
 HF WALK-ON 14C MVHF DREAMWALKER 29A
LADY OF PEAK DOT 772G KNIGHTS BLACKBIRD 9Y
 LADY OF PEAK DOT 427Y S V F RANCHERO
 LADY OF PEAK DOT 241R
 BW: 88 lbs. Adj. 205D: 747 lbs. Adj. 365D: 1281 lbs.
 Y G: +21 BW: +3.5 WW: +39 YW: +61 Milk: +22 Mat: +42

33 ERICA OF PEAK DOT 546S
 MALE PDAR 546S 1337398 March 13 2006
 S A V 8180 TRAVELER 004 SITZ TRAVELER 8180
S A V 004 PREDOMINANT 4438 BOYD FOREVER LADY 8003
 S A V EMBLYNETTE 1182 S A F 598 BANDO 5175
 S A V EMBLYNETTE 7319
 ADMIN INDY OF TWO M 3X BATSCHOL LAD 9U
ERICA OF PEAK DOT 241B FANCYLADY ANN OF TW M 9'86
 ERICA OF PEAK DOT 398Y S V F RANCHERO
 ERICA OF PEAK DOT 237R
 BW: 79 lbs. Adj. 205D: 659 lbs. Adj. 365D: 1270 lbs.
 YG+22 BW: +2.4 WW: +42 YW: +63 Milk: +18 Mat: +39

25 PEAK DOT PREDOMINANT 126S
 MALE PDAR 126S 1337611 March 11 2006
 S A V 8180 TRAVELER 004 SITZ TRAVELER 8180
S A V 004 PREDOMINANT 4438 BOYD FOREVER LADY 8003
 S A V EMBLYNETTE 1182 S A F 598 BANDO 5175
 S A V EMBLYNETTE 7319
 HF YOUNG GUN 139J GREENS PREMIUM 7578
BARDOLIA OF PEAK DOT 860L R F PRINCESS BLACKCAP 259C
 BARDOLIA OF PEAK DOT 512E 2TM STOCKMANS OSCAR 210
 MIA OF PEAK DOT 315C
 BW: 84 lbs. Adj. 205D: 790 lbs. Adj. 365D: 1309 lbs.
 YG: +21 BW: +3.5 WW: +42 YW: +63 Milk: +20 Mat: +41

28 PEAK DOT PREDOMINANT 110S
 MALE PDAR 110S 1337393 March 05 2006
 S A V 8180 TRAVELER 004 SITZ TRAVELER 8180
S A V 004 PREDOMINANT 4438 BOYD FOREVER LADY 8003
 S A V EMBLYNETTE 1182 S A F 598 BANDO 5175
 S A V EMBLYNETTE 7319
 S V F RANCHERO 4S PONDEROSA
CEDAR CREEK ASHLEY 14B BLACKBIRD OF S V F 0370
 CEDAR CREEK SHAUNA MR IMPRESSIVE HK 891
 DOUBLE AA ANNIE K 553'78
 BW: 65 lbs. Adj. 205D: 723 lbs. Adj. 365D: 1249 lbs.
 YG: +20 BW: -0.9 WW: +33 YW: +53 Milk: +17 Mat: +34

31 PEAK DOT PREDOMINANT 153S
 MALE PDAR 153S 1337396 March 21 2006
 S A V 8180 TRAVELER 004 SITZ TRAVELER 8180
S A V 004 PREDOMINANT 4438 BOYD FOREVER LADY 8003
 S A V EMBLYNETTE 1182 S A F 598 BANDO 5175
 S A V EMBLYNETTE 7319
 S V F RANCHERO 4S PONDEROSA
CEDAR CREEK LADY 54B BLACKBIRD OF S V F 0370
 LADY OLE SASKALTA 17M BARDOLENE OF DOUBLE AA 500'76
 SUSIE OLE SASKALTA 35H
 BW: 87 lbs. Adj. 205D: 719 lbs. Adj. 365D: 1299 lbs.
 YG: +21 BW: +1.9 WW: +31 YW: +52 Milk: +15 Mat: +31

34 PEAK DOT PREDOMINANT 168S
 MALE PDAR 168S 1337634 April 01 2006
 S A V 8180 TRAVELER 004 SITZ TRAVELER 8180
S A V 004 PREDOMINANT 4438 BOYD FOREVER LADY 8003
 S A V EMBLYNETTE 1182 S A F 598 BANDO 5175
 S A V EMBLYNETTE 7319
 PEAK DOT PANAMA 121G O S U PANAMA 4178
LASSIE OF PEAK DOT 277M LADY OF PEAK DOT 346C
 LASSIE OF PEAK DOT 428D 2TM STOCKMANS OSCAR 210
 PEAK DOT LASSIE 254B
 BW: 85 lbs. Adj. 205D: 742 lbs. Adj. 365D: 1433 lbs.
 YG: +37 BW: +2.2 WW: +38 YW: +76 Milk: +18 Mat: +37



SAR NEW TREND 4100 2080

VDAR NEW TREND 784
 LF NEW TREND 4100
 LAZY FOUR LUCY 003
 SAR NEW TREND 4100 2080
 RITO 3W3 OF OJ2 RITO 9FB3
 CHAMPION HILL POCAHONTAS
 WAR SARA 0209 7142

EPDs: BW +3.9 WW +41 YW +87 MILK+20 MATERNAL+41 YG+43

When searching for herd bulls one thing we always try to find is a great producing mother cow, but even more importantly we look for bulls that come from consistently strong breeding lines. By this we mean they come from a line that have the added ability to stamp their calves with their own distinct style and character. The NEW TREND line has been breeding very well and very consistently for years. NEW TREND 4100 is the newest and strongest breeding bull to rise out of this proven line of cattle. NEW TREND 4100 consistently stamps his calves with extra length, heavy muscle, clean sheaths, and thick hair coats.

SAR NEW TREND 4100 2080

Sire of Lots 35, 36, and 37.



Basin Prime Cut 354K

16 SONS
and Grand-
sons
SELL!

BW +2.3
 WW +37
 YW +56
 MILK +18

Basin Prime Cut 354K is as trouble free as you can design them. He has excellent muscle design, good loose flank and the fleshing ability the industry strives for. You'll find him solid black without a white hair, and equipped with an excellent set of testicles. He is a calving ease bull with tremendous growth. Basin Prime Cut 354K is a changer and an improver, the rare kind that has character and herd bull written all over him. His sons are always favorites sale day while his daughters are making feminine, broody females with abundant milk and quality udders.

FINKS 5522-6148
 SUMMITCREST PRIME CUT 1642
 SUMMITCREST BARBARA 0874
 BASIN PRIME CUT 354K
 BASIN EZ
 BASIN HEIRESS 353
 BASIN HEIRESS 7240

35 PEAK DOT NEW TREND 1S

MALE PDAR 1S 1337654 January 28 2006
 L F NEW TREND 4100 V D A R NEW TREND 784
 S A R NEW TREND 4100 2080 LAZY FOUR LUCY 003
 CHAMPION HILL POCAHONTAS RITO 3W3 OF OJ2 RITO 9FB3
 WAR SARA 0209 7142
 BASIN PRIME CUT 354K SUMMITCREST PRIM CUT 1G42
 BARBARA OF PEAK DOT 435N BASIN HEIRESS 353
 LADY OF PEAK DOT 521K DOUBLE AA RITO 287'97
 LADY OF PEAK DOT 555E
 BW: 90 lbs. Adj. 205D: 757 lbs. Adj. 365D: 1239 lbs.
 YG: +29 BW: +4.8 WW: +38 YW: +67 Milk: +16 Mat: +35



PEAK DOT NEW TREND 1S LOT 35

36 PEAK DOT NEW TREND 51S

MALE (TW) PDAR 51S 1337502 February 11 2006
 L F NEW TREND 4100 V D A R NEW TREND 784
 S A R NEW TREND 4100 2080 LAZY FOUR LUCY 003
 CHAMPION HILL POCAHONTAS RITO 3W3 OF OJ2 RITO 9FB3
 WAR SARA 0209 7142
 DOUBLE AA BARDOLIER 3'97 DOUBLE AA BARDOLIER 15'90
 LADY OF PEAK DOT 386J DOUBLE AA ANNIE K 501'91
 LADY OF PEAK DOT 242B PEAK DOT RANCHERO 405Y
 LADY OF PEAK DOT 223R
 BW: 79 lbs. Adj. 205D: 730 lbs. Adj. 365D: 1298 lbs.
 YG: +31 BW: +3.4 WW: +34 YW: +64 Milk: +18 Mat: +34



PEAK DOT NEW TREND 51S LOT 36

37 PEAK DOT NEW TREND 409S

MALE PDAR 409S 1337511 February 02 2006
 L F NEW TREND 4100 V D A R NEW TREND 784
 S A R NEW TREND 4100 2080 LAZY FOUR LUCY 003
 CHAMPION HILL POCAHONTAS RITO 3W3 OF OJ2 RITO 9FB3
 WAR SARA 0209 7142
 HF WALK-ON 14C MVHF DREAMWALKER 29A
 ROSILLA OF PEAK DOT 414J KNIGHTS BLACKBIRD 9Y
 ROSILLA OF PEAK DOT 565E 2TM STOCKMANS OSCAR 210
 LADY OF PEAK DOT 179R
 BW: 84 lbs. Adj. 205D: 720 lbs. Adj. 365D: 1239 lbs.
 YG: +31 BW: +2.9 WW: +33 YW: +64 Milk: +15 Mat: +32

38 PEAK DOT PRIME CUT 150S

MALE PDAR 150S 1337560 March 21 2006
 SUMMITCREST PRIME CUT 1G42 FINKS 5522-6148
 BASIN PRIME CUT 354K SUMMITCREST BARBARA 0874
 BASIN HEIRESS 353 BASIN E Z
 BASIN HEIRESS 7240
 DOUBLE AA RITO 261'97 JOHNSTON 2100 BARDOLENE 554Y
 DOUBLE AA LADY 76'01 DOUBLE AA ANNIE K 87'91
 DOUBLE AA LADY 26'96 DOUBLE AA BLACKMAN 24'93
 DOUBLE AA LADY 10'93
 BW: 87 lbs. Adj. 205D: 754 lbs. Adj. 365D: 1326 lbs.
 YG: +18 BW: +3.4 WW: +31 YW: +48 Milk: +14 Mat: +30



PEAK DOT PRIME CUT 150S LOT 38

39 PEAK DOT PRIME CUT 77S

MALE PDAR 77S 1337735 February 22 2006
 SUMMITCREST PRIME CUT 1G42 FINKS 5522-6148
 BASIN PRIME CUT 354K SUMMITCREST BARBARA 0874
 BASIN HEIRESS 353 BASIN E Z
 BASIN HEIRESS 7240
 STEVENSON BRUNO 6371 STEVENSON BRUNO 561G
 JESSICA OF PEAK DOT 815P STEVENSON QUEEN 828F
 JESSICA OF PEAK DOT 794L PEAK DOT RANSOM 152H
 JESSICA OF PEAK DOT 549E
 BW: 80 lbs. Adj. 205D: 727 lbs. Adj. 365D: 1382 lbs.
 YG: +28 BW: +2.4 WW: +33 YW: +61 Milk: +18 Mat: +35



PEAK DOT PRIME CUT 77S LOT 39

40 PEAK DOT PRIME CUT 59S
 MALE PDAR 59S 1348354 February 13 2006
 SUMMITCREST PRIME CUT 1G42 FINKS 5522-6148
BASIN PRIME CUT 354K SUMMITCREST BARBARA 0874
 BASIN HEIRESS 353 BASIN E Z
 BASIN HEIRESS 7240
 HF MOST WANTED 46H HF WALKER 107E
BAMBI OF PEAK DOT 528K HFRF ROSEBUD 72F
 BAMBI OF PEAK DOT 938H CHAMPIONHILL GENERAL STONE
 BAMBI OF PEAK DOT 361C
 BW: 87 lbs. Adj. 205D: 769 lbs. Adj. 365D: 1186 lbs.
 YG: +21 BW: +2.5 WW: +30 YW: +51 Milk: +16 Mat: +31

45 PEAK DOT PRIME CUT 160S
 MALE PDAR 160S 1337539 March 25 2006
 SUMMITCREST PRIME CUT 1G42 FINKS 5522-6148
BASIN PRIME CUT 354K SUMMITCREST BARBARA 0874
 BASIN HEIRESS 353 BASIN E Z
 BASIN HEIRESS 7240
 SCA 03H OF IDEAL 1418 IDEAL 1418 OF 8103 4286
CEDAR OF PEAK DOT 545K SCA 20E OF IDEAL 033 7258
 CEDAR CREEK 202F TURBULENCE 167 A O
 PRIDE OF CEDAR CREEK 146X
 BW: 85 lbs. Adj. 205D: 741 lbs. Adj. 365D: 1288 lbs.
 YG: +24 BW: +3.5 WW: +36 YW: +60 Milk: +17 Mat: +35

49 PEAK DOT PRIME CUT 257S
 MALE PDAR 257S 1337663 March 27 2006
 BASIN PRIME CUT 354K SUMMITCREST PRIME CUT 1G42
PEAK DOT PRIME CUT 152P BASIN HEIRESS 353
 LADY OF PEAK DOT 623F 2TM STOCKMANS OSCAR 210
 LADY OF PEAK DOT 364Y
 STEVENSON BRUNO 6371 STEVENSON BRUNO 561G
LADY OF PEAK DOT 466N STEVENSON QUEEN 828F
 LADY OF PEAK DOT 333C FREYS EXTRA PROFIT
 LADY OF PEAK DOT 696Z
 BW: 86 lbs. Adj. 205D: 759 lbs. Adj. 365D: 1446 lbs.
 YG: +22 BW: +3.6 WW: +35 YW: +57 Milk: +20 Mat: +38

41 PEAK DOT PRIME CUT 256S
 MALE PDAR 256S 1337688 March 23 2006
 BASIN PRIME CUT 354K SUMMITCREST PRIME CUT 1G42
PEAK DOT PRIME CUT 152P BASIN HEIRESS 353
 LADY OF PEAK DOT 623F 2TM STOCKMANS OSCAR 210
 LADY OF PEAK DOT 364Y
 S A V SAUGAHATCHEE 9374 SAUGAHATCHEE 3000C
BARDOLIA OF PEAK DOT 595N S A V DOMINIQUE 5003
 BARDOLIA OF PEAK DOT 585K HF MOST WANTED 46H
 BARDOLIA OF PEAK DOT 963H
 BW: 89 lbs. Adj. 205D: 729 lbs. Adj. 365D: 1324 lbs.
 YG: +22 BW: +3.8 WW: +34 YW: +57 Milk: +14 Mat: +31

46 PEAK DOT PRIME CUT 223S
 MALE (TW) PDAR 223S 1337671 February 19 2006
 BASIN PRIME CUT 354K SUMMITCREST PRIME CUT 1G42
PEAK DOT PRIME CUT 433M BASIN HEIRESS 353
 BARDOLIA OF PEAK DOT 572E PEAK DOT ROMEO 27C
 LADY OF PEAK DOT 223R
 S A R FAME 2089 S A F FAME
MIA OF PEAK DOT 500N THREE TREES SKYMERE 57X7
 MIA OF PEAK DOT 351J PEAKDOT GENERAL STONE 25G
 MIA OF PEAK DOT 229B
 BW: 68 lbs. Adj. 205D: 648 lbs. Adj. 365D: 1254 lbs.
 BW:n/a WW:n/a YW:n/a Milk:n/a Mat:n/a

50 PEAK DOT PRIME CUT 182S
 MALE PDAR 182S 1337495 April 20 2006
 SUMMITCREST PRIME CUT 1G42 FINKS 5522-6148
BASIN PRIME CUT 354K SUMMITCREST BARBARA 0874
 BASIN HEIRESS 353 BASIN E Z
 BASIN HEIRESS 7240
 PEAK DOT GENERAL STONE 133 CHAMPION HILL GENERAL STONE
LADY OF PEAK DOT 367J LADY OF PEAK DOT 223B
 LADY OF PEAK DOT 520E HF WALK-ON 14C
 LADY OF PEAK DOT 631Z
 BW: 78 lbs. Adj. 205D: 758 lbs. Adj. 365D: 1367 lbs.
 YG: +24 BW: +2.7 WW: +37 YW: +60 Milk: +16 Mat: +34

42 PEAK DOT PRIME CUT 73S
 MALE PDAR 73S 1348358 February 20 2006
 SUMMITCREST PRIME CUT 1G42 FINKS 5522-6148
BASIN PRIME CUT 354K SUMMITCREST BARBARA 0874
 BASIN HEIRESS 353 BASIN E Z
 BASIN HEIRESS 7240
 2TM STOCKMANS OSCAR 210 TC STOCKMAN
QUEENMOTHER OF PEAK DOT 449D MISS MAID T 4984
 BARDOLINE OF PEAK DOT 134N
 MIA OF PEAK DOT 251R MIA OF PEAK DOT 11L
 BW: 81 lbs. Adj. 205D: 695 lbs. Adj. 365D: 1225 lbs.
 YG: +18 BW: +1.9 WW: +26 YW: +44 Milk: +13 Mat: +26

47 PEAK DOT PRIME CUT 250S
 MALE PDAR 250S 1337679 February 21 2006
 BASIN PRIME CUT 354K SUMMITCREST PRIME CUT 1G42
PEAK DOT PRIME CUT 152P BASIN HEIRESS 353
 LADY OF PEAK DOT 623F 2TM STOCKMANS OSCAR 210
 LADY OF PEAK DOT 364Y
 S A V SAUGAHATCHEE 9374 LEACHMAN SAUGAHATCHEE
SUSIE OF PEAK DOT 557N S A V DOMINIQUE 5003
 CEDAR CREEK LADY 54B S V F RANCHERO
 LADY OLE SASKALTA 17M
 BW: 87 lbs. Adj. 205D: 646 lbs. Adj. 365D: 1246 lbs.
 YG: +17 BW: +2.9 WW: +24 YW: +41 Milk: +10 Mat: +22

51 PEAK DOT PRIME CUT 25S
 MALE PDAR 25S 1337508 February 06 2006
 SUMMITCREST PRIME CUT 1G42 FINKS 5522-6148
BASIN PRIME CUT 354K SUMMITCREST BARBARA 0874
 BASIN HEIRESS 353 BASIN E Z
 BASIN HEIRESS 7240
 HF WALK-ON 14C MVHF DREAMWALKER 29A
PRINCESS OF PEAK DOT 404J KNIGHTS BLACKBIRD 9Y
 CEDAR CREEK PRINCESS 340X MR IMPRESSIVE HK 891
 PEAK DOT PRINCESS 2J
 BW: 80 lbs. Adj. 205D: 703 lbs. Adj. 365D: 1303 lbs.
 YG: +22 BW: +1.9 WW: +26 YW: +48 Milk: +16 Mat: +29

43 PEAK DOT PRIME CUT 179S
 MALE PDAR 179S 1337516 April 13 2006
 SUMMITCREST PRIME CUT 1G42 FINKS 5522-6148
BASIN PRIME CUT 354K SUMMITCREST BARBARA 0874
 BASIN HEIRESS 353 BASIN E Z
 BASIN HEIRESS 7240
 SCA 03H OF IDEAL 1418 IDEAL 1418 OF 8103 4286
BARBARA OF PEAK DOT 502K SCA 20E OF IDEAL 033 7258
 BARBARA OF PEAK DOT 941H PEAKDOT GENERAL STONE 13F
 BARBARA OF PEAK DOT 525E
 BW: 81 lbs. Adj. 205D: 725 lbs. Adj. 365D: 1342 lbs.
 YG: +25 BW: +3.4 WW: +42 YW: +66 Milk: +18 Mat: +39



52 PEAK DOT PRIME CUT 226S
 MALE PDAR 226S 1337668 March 24 2006
 BASIN PRIME CUT 354K SUMMITCREST PRIME CUT 1G42
PEAK DOT PRIME CUT 433M BASIN HEIRESS 353
 BARDOLIA OF PEAK DOT 572E PEAK DOT ROMEO 27C
 LADY OF PEAK DOT 223R
 S A R FAME 2089 S A F FAME
ROSE OF PEAK DOT 487N THREE TREES SKYMERE 57X7
 ROSE OF PEAK DOT 317J PEAK DOT GENERAL STONE 25G
 CEDAR CREEK ROSE 47B
 BW: 81 lbs. Adj. 205D: 679 lbs. Adj. 365D: 1381 lbs.
 YG: +25 BW: +2.9 WW: +42 YW: +67 Milk: +14 Mat: +35

44 PEAK DOT PRIME CUT 183S
 MALE PDAR 183S 1337577 April 21 2006
 SUMMITCREST PRIME CUT 1G42 FINKS 5522-6148
BASIN PRIME CUT 354K SUMMITCREST BARBARA 0874
 BASIN HEIRESS 353 BASIN E Z
 BASIN HEIRESS 7240
 HF YOUNG GUN 139J GREENS PREMIUM 7578
BARBARA OF PEAK DOT 701L R F PRINCESS BLACKCAP 259C
 BARBARA OF PEAK DOT 921H O S U PANAMA 4178
 BARBARA OF PEAK DOT 642F
 BW: 79 lbs. Adj. 205D: 822 lbs. Adj. 365D: 1360 lbs.
 YG: +25 BW: +3.0 WW: +39 YW: +64 Milk: +20 Mat: +39

48 PEAK DOT PRIME CUT 181S
 MALE PDAR 181S 1348372 April 19 2006
 SUMMITCREST PRIME CUT 1G42 FINKS 5522-6148
BASIN PRIME CUT 354K SUMMITCREST BARBARA 0874
 BASIN HEIRESS 353 BASIN E Z
 BASIN HEIRESS 7240
 2TM STOCKMANS OSCAR 210 TC STOCKMAN
LADY OF PEAK DOT 433D MISS MAID T 4984
 LADY OF PEAK DOT 683Z S V F RANCHERO
 LADY OF PEAK DOT 43W
 BW: 81 lbs. Adj. 205D: 767 lbs. Adj. 365D: 1362 lbs.
 YG: +30 BW: +3.3 WW: +38 YW: +67 Milk: +14 Mat: +32

53 PEAK DOT PRIME CUT 228S
 MALE PDAR 228S 1362008 March 28 2006
 BASIN PRIME CUT 354K SUMMITCREST PRIME CUT 1G42
PEAK DOT PRIME CUT 28N BASIN HEIRESS 353
 MIA OF PEAK DOT 315C FREYS EXTRA PROFIT
 MIA OF PEAK DOT 72W
 S A R FAME 2089 S A F FAME
LASSIE OF PEAK DOT 436N THREE TREES SKYMERE 57X7
 LASSIE OF PEAK DOT 385J DOUBLE AA RITO 287'97
 LASSIE OF PEAK DOT 437D
 BW: 79 lbs. Adj. 205D: 715 lbs. Adj. 365D: 1321 lbs.
 YG: +18 BW: +1.3 WW: +32 YW: +49 Milk: +14 Mat: +30



PRINCESS OF PEAK DOT 404J
 Dam of lot 51

PRINCESS OF PEAK DOT 529R
 Maternal sister to lot 51

HOBSON STEVENSON BRUNO 6371



BW +1.9
WW +37
YW +63
MILK +30

**17 SONS
and Grand-
sons
SELL!**

STEVENSON ROYCE 741C
STEVENSON BRUNO 561G
JRS ENCHANTRESS 16A
STEVENSON BRUNO 6371
BASIN RAINMAKER 2844
STEVENSON QUEEN 828F
STEVENSON QUEEN 217C

Hobson was the lot 1 bull and high selling bull out of the Stevenson-Basin 2001 sale to Peak Dot Ranch for \$16000(U.S.). He was the second highest actual weaning weight calf at Stevenson-Basin Ranch. He ranks in the top 1% for milk EPD. If you are looking to put some power, performance and punch into your herd while improving maternal traits, and scrotal size, Hobson hits the target.



PEAK DOT HOBSON 171S- LOT 54

54 PEAK DOT HOBSON 171S

MALE PDAR 171S 1337464 March 08 2006
STEVENSON BRUNO 561G STEVENSON ROYCE 741C
STEVENSON BRUNO 6371 JRS ENCHANTRESS 16A
STEVENSON QUEEN 828F BASIN RAINMAKER 2844
STEVENSON QUEEN 217C
PEAK DOT STOCKMAN 12F 2TM STOCKMANS OSCAR 210
SUSIE OF PEAK DOT 914H PRINCESS OF PEAK DOT 209B
CEDAR CREEK LADY 125E FREYS EXTRA PROFIT
LADY CEDAR CREEK 125Z
BW: 91 lbs. Adj. 205D: 632 lbs. Adj. 365D: 1145 lbs.
YG +23 BW: +4.2 WW: +20 YW: +43 Milk: +20 Mat: +30



SUSIE OF PEAK DOT 523R
Full sister to lot 54



PEAK DOT HOBSON 142P
Full brother to lot 54

Out of a great cow Susie of Peak Dot 914H. A rock solid moderate framed son of Hobson that is loaded with raw muscle and substance. His full brother was the high selling bull in the 2005 sale to Ring Creek Farm for \$13500. His full sister was featured in the 2006 sale and was purchased by Ring Creek Farm.

55 PEAK DOT HOBSON 185S

MALE PDAR 185S 1360020 April 22 2006
STEVENSON BRUNO 561G STEVENSON ROYCE 741C
STEVENSON BRUNO 6371 JRS ENCHANTRESS 16A
STEVENSON QUEEN 828F BASIN RAINMAKER 2844
STEVENSON QUEEN 217C
DOUBLE AA RITO 287'97 DOUBLE AA RETO 554'93
LADY OF PEAK DOT 575K DOUBLE AA ANNIE K 507'92
LADY OF PEAK DOT 764G HF WALK-ON 14C
LADY OF PEAK DOT 473D
BW: 82 lbs. Adj. 205D: 785 lbs. Adj. 365D: 1300 lbs.
YG: +30 BW: +3.3 WW: +44 YW: +74 Milk: +25 Mat: +46



PEAK DOT HOBSON 185S - LOT 55

56 PEAK DOT HOBSON 36S

MALE PDAR 36S 1337478 February 09 2006
STEVENSON BRUNO 561G STEVENSON ROYCE 741C
STEVENSON BRUNO 6371 JRS ENCHANTRESS 16A
STEVENSON QUEEN 828F BASIN RAINMAKER 2844
STEVENSON QUEEN 217C
PEAK DOT STOCKMAN 11F 2TM STOCKMANS OSCAR 210
PRIDE OF PEAK DOT 305J BARBARA OF PEAK DOT 316Y
WINDOVER PRIDE 6U BROST POWER DRIVE
WINDOVER PRIDE 1R
BW: 81 lbs. Adj. 205D: 675 lbs. Adj. 365D: 1216 lbs.
YG: +23 BW: +1.3 WW: +28 YW: +50 Milk: +18 Mat: +32

57 PEAK DOT HOBSON 187S

MALE PDAR 187S 1337573 April 26 2006
STEVENSON BRUNO 6371 STEVENSON BRUNO 561G
PEAK DOT HOBSON 57N STEVENSON QUEEN 828F
LADY OF PEAK DOT 558K PEAK DOT WALK-ON 51G
LADY OF PEAK DOT 248X
SCA 03H OF IDEAL 1418 IDEAL 1418 OF 8103 4286
LADY OF PEAK DOT 645K SCA 20E OF IDEAL 033 7258
LADY OF PEAK DOT 683Z S V F RANCHERO
LADY OF PEAK DOT 43W
BW: 75 lbs. Adj. 205D: 785 lbs. Adj. 365D: 1431 lbs
YG: +35 BW: +3.2 WW: +33 YW: +67 Milk: +16 Mat: +32

58 PEAK DOT HOBSON 46S

MALE PDAR 46S 1337515 February 10 2006
STEVENSON BRUNO 561G STEVENSON ROYCE 741C
STEVENSON BRUNO 6371 JRS ENCHANTRESS 16A
STEVENSON QUEEN 828F BASIN RAINMAKER 2844
STEVENSON QUEEN 217C
PEAKDOT GENERAL STONE 25G CHAMPIONHILL GENERAL STONE
LADY OF PEAK DOT 470J BARBARA OF PEAK DOT 59W
LADY OF PEAK DOT 722G CHAMPION HILL GENERAL STONE
LADY OF PEAK DOT 456D
BW: 79 lbs. Adj. 205D: 707 lbs. Adj. 365D: 1189 lbs.
YG: +31 BW: +3.4 WW: +31 YW: +61 Milk: +18 Mat: +33

59 PEAK DOT HOBSON 170S

MALE PDAR 170S 1364574 April 04 2006
STEVENSON BRUNO 6371 STEVENSON BRUNO 561G
PEAK DOT HOBSON 57N STEVENSON QUEEN 828F
LADY OF PEAK DOT 558K PEAK DOT WALK-ON 51G
LADY OF PEAK DOT 248X
S A R NEW TREND 4100 2080 L F NEW TREND 4100
DUCHESS OF PEAK DOT 502M CHAMPION HILL POCAHONTAS
O S U PANAMA 4178
DUCHESS OF PEAK DOT 945H DUCHESS OF PEAK DOT 621F
BW: 81 lbs. Adj. 205D: 706 lbs. Adj. 365D: 1271 lbs.
YG: +38 BW: +3.7 WW: +35 YW: +72 Milk: +20 Mat: +37

60 PEAK DOT HOBSON 172S

MALE PDAR 172S 1337643 April 09 2006
STEVENSON BRUNO 6371 STEVENSON BRUNO 561G
PEAK DOT HOBSON 57N STEVENSON QUEEN 828F
LADY OF PEAK DOT 558K PEAK DOT WALK-ON 51G
LADY OF PEAK DOT 248X
S A V SAUGAHATCHEE 9374 LEACHMAN SAUGAHATCHEE 3000C
S A V DOMINIQUE 5003
BARDOLIA OF PEAK DOT 528M 2TM STOCKMANS OSCAR 210
MIA OF PEAK DOT 315C
BW: 82 lbs. Adj. 205D: 797 lbs. Adj. 365D: 1305 lbs.
YG: +36 BW: +3.9 WW: +35 YW: +70 Milk: +17 Mat: +34

61 PEAK DOT HOBSON 190S

MALE PDAR 190S 1337630 April 28 2006
STEVENSON BRUNO 6371 STEVENSON BRUNO 561G
PEAK DOT HOBSON 57N STEVENSON QUEEN 828F
LADY OF PEAK DOT 558K PEAK DOT WALK-ON 51G
LADY OF PEAK DOT 248X
GREENS PREMIUM 7578
HF YOUNG GUN 139J R F PRINCESS BLACKCAP 259C
PLIA OF PEAK DOT 265M FREYS EXTRA PROFIT
MIA OF PEAK DOT 314C MIA OF PEAK DOT 151A
BW: 82 lbs. Adj. 205D: 702 lbs. Adj. 365D: 1447 lbs
YG: +28 BW: +3.4 WW: +35 YW: +62 Milk: +20 Mat: +37

62 PEAK DOT HOBSON 88S
 MALE PDAR 88S 1337741 February 27 2006
 STEVENSON BRUNO 561G STEVENSON ROYCE 741C
STEVENSON BRUNO 6371 JRS ENCHANTRESS 16A
 STEVENSON QUEEN 828F BASIN RAINMAKER 2844
 STEVENSON QUEEN 217C
 ELLIOTT FORTUNE 16M STEVENSON FORTUNE 425C
PRIDE OF PEAK DOT 887P DOUBLE AA SUSIE 295'00
 PRIDE OF PEAK DOT 705L DOUBLE AA RITO 287'97
 WINDOVER PRIDE 6U
 BW: 80 lbs. Adj. 205D: 701 lbs. Adj. 365D: 1304 lbs.
 YG: +32 BW: +3.4 WW: +32 YW: +64 Milk: +21 Mat: +37

67 PEAK DOT HOBSON 177S
 MALE PDAR 177S 1337519 April 12 2006
 STEVENSON BRUNO 6371 STEVENSON BRUNO 561G
PEAK DOT HOBSON 57N STEVENSON QUEEN 828F
 LADY OF PEAK DOT 558K PEAK DOT WALK-ON 51G
 LADY OF PEAK DOT 248X
 HF MOST WANTED 46H HF WALKER 107E
MAYFLOWER OF PEAK DOT 506K HFRF ROSEBUD 72F
 MAYFLOWER OF PEAK DOT 967 PEAK DOT STOCKMAN 12F
 MAYFLOWER OF CEDARCREEK 1
 BW: 86 lbs. Adj. 205D: 705 lbs. Adj. 365D: 1284 lbs.
 YG: +29 BW: +3.0 WW: +31 YW: +59 Milk: +17 Mat: +32

63 PEAK DOT HOBSON 197S
 MALE PDAR 197S 1337557 May 01 2006
 STEVENSON BRUNO 6371 STEVENSON BRUNO 561G
PEAK DOT HOBSON 57N STEVENSON QUEEN 828F
 LADY OF PEAK DOT 558K PEAK DOT WALK-ON 51G
 LADY OF PEAK DOT 248X
 DOUBLE AA BARDOLENE 22'98 GEIS BARDOLENE 28'92
DOUBLE AA ELENA 43'01 DOUBLE AA ANNIE K 543'92
 JOHNSTON 2100 BARDOLENE 554Y
 DOUBLE AA ELENA 617'92 DOUBLE AA ELENA 8'89
 BW: 82 lbs. Adj. 205D: 726 lbs. Adj. 365D: 1426 lbs.
 YG: +17 BW: +3.4 WW: +27 YW: +44 Milk: +16 Mat: +30

68 PEAK DOT HOBSON 200S
 MALE PDAR 200S 1337636 May 10 2006
 STEVENSON BRUNO 561G STEVENSON ROYCE 741C
STEVENSON BRUNO 6371 JRS ENCHANTRESS 16A
 STEVENSON QUEEN 828F BASIN RAINMAKER 2844
 STEVENSON QUEEN 217C
 DOUBLE AA RITO 267'00 DOUBLE AA RITO 206'97
LADY OF PEAK DOT 282M DOUBLE AA ANNIE K 562'91
 LADY OF PEAK DOT 464J PEAKDOT GENERAL STONE 25G
 LADY OF PEAK DOT 327C
 BW: 76 lbs. Adj. 205D: 717 lbs. Adj. 365D: 1351 lbs.
 YG: +29 BW: +3.2 WW: +34 YW: +63 Milk: +21 Mat: +38

64 PEAK DOT HOBSON 75S
 MALE PDAR 75S 1337635 February 21 2006
 STEVENSON BRUNO 6371 STEVENSON BRUNO 561G
PEAK DOT HOBSON 57N STEVENSON QUEEN 828F
 LADY OF PEAK DOT 558K PEAK DOT WALK-ON 51G
 LADY OF PEAK DOT 248X
 PEAK DOT PANAMA 121G O S U PANAMA 4178
LADY OF PEAK DOT 279M LADY OF PEAK DOT 346C
 S V F RANCHERO
 LADY OF PEAK DOT 427Y LADY OF PEAK DOT 241R
 BW: 84 lbs. Adj. 205D: 694 lbs. Adj. 365D: 1254 lbs.
 YG: +27 BW: +2.8 WW: +25 YW: +51 Milk: +16 Mat: +29

69 PEAK DOT HOBSON 163S
 MALE PDAR 163S 1364575 March 28 2006
 STEVENSON BRUNO 6371 STEVENSON BRUNO 561G
PEAK DOT HOBSON 57N STEVENSON QUEEN 828F
 LADY OF PEAK DOT 558K PEAK DOT WALK-ON 51G
 LADY OF PEAK DOT 248X
 PEAK DOT STOCKMAN 120G 2TM STOCKMANS OSCAR 210
BARBARA OF PEAK DOT 466J PR NEONIA 21C
 BARBARA OF PEAK DOT 750G O S U PANAMA 4178
 BARBARA OF PEAK DOT 525E
 BW: 88 lbs. Adj. 205D: 841 lbs. Adj. 365D: 1366 lbs.
 YG: +34 BW: +3.2 WW: +35 YW: +69 Milk: +16 Mat: +33

65 PEAK DOT HOBSON 7S
 MALE (TW) PDAR 7S 1337542 January 30 2006
 STEVENSON BRUNO 561G STEVENSON ROYCE 741C
STEVENSON BRUNO 6371 JRS ENCHANTRESS 16A
 STEVENSON QUEEN 828F BASIN RAINMAKER 2844
 STEVENSON QUEEN 217C
 PEAK DOT WALK-ON 51G HF WALK-ON 14C
LADY OF PEAK DOT 558K LADY OF PEAK DOT 451D
 S V F RANCHERO
 LADY OF PEAK DOT 248X LADY OF PDAR 106M
 BW: 76 lbs. Adj. 205D: 753 lbs. Adj. 365D: 1353 lbs.
 YG n/a BW: n/a WW: n/a YW: n/a Milk: n/a

70 PEAK DOT HOBSON 83S
 MALE PDAR 83S 1337430 February 25 2006
 STEVENSON BRUNO 6371 STEVENSON BRUNO 561G
PEAK DOT HOBSON 57N STEVENSON QUEEN 828F
 LADY OF PEAK DOT 558K PEAK DOT WALK-ON 51G
 LADY OF PEAK DOT 248X
 CHAMPION HILL GENERAL STONE CENTURY TOUCHSTONE 131
LADY OF PEAK DOT 622F R&J LADY 1427
 LADY OF PEAK DOT 143A ADMIN INDY OF TWO M 3X
 LADY OF PEAK DOT 43W
 BW: 84 lbs. Adj. 205D: 781 lbs. Adj. 365D: 1261 lbs.
 YG: +34 BW: +4.0 WW: +35 YW: +69 Milk: +21 Mat: +39

66 PEAK DOT HOBSON 592S
 MALE PDAR 592S no paper April 16 2006
 STEVENSON BRUNO 561G STEVENSON ROYCE 741C
STEVENSON BRUNO 6371 JRS ENCHANTRESS 16A
 STEVENSON QUEEN 828F BASIN RAINMAKER 2844
 STEVENSON QUEEN 217C
 TURBULENCE 167 A O R&J TURBO 2148
CEDAR CREEK TURBULENCE 25E BLACKBIRD P D 1 A O
 CEDAR CREEK MAYFLOWER 25C CANADIAN LUMBERJACK
 DOUBLE AA MAYFLOWER 23'80
 BW: 82lbs. Adj 205:702lbs. Adj 365 day: 1234lbs.
 YG n/a BW:n/a WW: n/a YW: n/a Milk: n/a

*** Scott Turner's Leather & Tack ***
 * Handmade Headstalls, Breast collars & chaps
 * Leather Braiding
 * Leather Crafts
 * Custom Orders Available
 Scott & Mia Turner
 Box 118
 Wood Mountain, SK SOH 4L0
 306-266-2056
 Email - ms.turner@sasktel.net



Wintering Bulls: Peak Dot will winter bulls for two dollars a day. Bulls will be semen tested before delivery in spring.

These coming 2 year old virgin bulls were selected last spring for the fall sale. These bulls were raised from birth to weaning without creep. From weaning through the winter these animals were fed a high roughage growing ration. During the summer they ran on grass pastures. From October 1st until the sale these bulls are fed a high roughage ration in a large acreage to provide for plenty of exercise.





**5 SONS
SELL!**

HF POWER-UP 72N

CONNEALY FRONTLINE
RIVERBEND POWERLINE 0050
LEACHMAN BLACKBIRD 8060
HF POWER-UP 72N
PAPA EQUATOR 2928
HF ROSEBUD 23G
HF MISS ROSEBUD 15C

HF Power-Up was the 2003 Sr. bull calf champion at Agribition 2003, and the Agribition Grand Champion in 2005. He caught the attention of cattlemen when he highlighted the 2003 Hamilton Farms sale where he was admired for his awesome performance and his massive volume and muscle. He holds EPDs in the top 10% for weaning weight and yearling weight, and stands in the top 15% of the breed for milk. His PAPA Equator 2928 dam is picture perfect with a strong production record.



Heather of Peak Dot 437R
full sister to lot 71



Heather of Peak Dot 544K
Dam of lot 71



PEAK DOT POWERLINE 26S - LOT 71

A performance powerhouse who posted a 205 day weight of 847lbs. His full sister was a feature lot and the heaviest heifer in the 2006 sale. His dam has frozen several eggs and will be a cornerstone in the Peak Dot program.

71 PEAK DOT POWERLINE 26S
MALE PDAR 26S 1337538 February 06 2006
RIVERBEND POWERLINE 0050 CONNEALY FRONTLINE
LEACHMAN BLACKBIRD 8060
KDF POWERLINE 28N NEEDMORE PRIDE TRAVELLER 2F
LADY BONNIE OF K DEEN KY 75K DYNALADYLYN OF NEEDMORE 2
DOUBLE AA RITO 287'97 DOUBLE AA RETO 554'93
HEATHER OF PEAK DOT 544K DOUBLE AA ANNIE K 507'92
HEATHER OF PEAK DOT 460D 2TM STOCKMANS OSCAR 210
HEATHER OF PEAK DOT 228B
BW: 87 lbs. Adj. 205D: 847 lbs. Adj. 365D: 1337 lbs.
YG: +26 BW: +4.0 WW: +45 YW: +71 Milk: +18 Mat: +41

74 PEAK DOT POWERLINE 67S
MALE PDAR 67S 1348363 February 17 2006
RIVERBEND POWERLINE 0050 CONNEALY FRONTLINE
LEACHMAN BLACKBIRD 8060
KDF POWERLINE 28N NEEDMORE PRIDE TRAVELLER 2F
LADY BONNIE OF K DEEN KY 75K DYNALADYLYN OF NEEDMORE 24D
FREYS EXTRA PROFIT G M A R EXTRA PROFIT X081
MIA OF PEAK DOT 314C F A R KINANNIE 12T
MIA OF PEAK DOT 151A CANADIAN LUMBERJACK
MIA OF PEAK DOT 72W
BW: 83 lbs. Adj. 205D: 690 lbs. Adj. 365D: 1252 lbs.
YG: +16 BW: +3.6 WW: +29 YW: +45 Milk: +16 Mat: +31

72 PEAK DOT POWER UP 63S
MALE PDAR 63S 1337683 February 14 2006
RIVERBEND POWERLINE 0050 CONNEALY FRONTLINE
LEACHMAN BLACKBIRD 8060
HF POWER-UP 72N PAPA EQUATOR 2928
HF ROSEBUD 23G HF MISS ROSEBUD 15C
DOUBLE AA RITO 580'99 DOUBLE AA RETO 554'93
ANNIE K OF PEAK DOT 570N DOUBLE AA ANNIE K 533'94
DOUBLE AA ANNIE K 261'01 DOUBLE AA BARDOLENE 22'98
DOUBLE AA ANNIE K 209'98
BW: 84 lbs. Adj. 205D: 727 lbs. Adj. 365D: 1284 lbs.
YG: +32 BW: +4.7 WW: +36 YW: +68 Milk: +13 Mat: +31

75 PEAK DOT POWER UP 69S
MALE PDAR 69S 1337685 February 18 2006
RIVERBEND POWERLINE 0050 CONNEALY FRONTLINE
LEACHMAN BLACKBIRD 8060
HF POWER-UP 72N PAPA EQUATOR 2928
HF ROSEBUD 23G HF MISS ROSEBUD 15C
FCR MAGISTRATE 07L CALEDONIAN EXECUTIVE BARDOLE
LADY OF PEAK DOT 573N BATSCHOL LADY 42U
LADY OF PEAK DOT 503K SCA 03H OF IDEAL 1418
LADY OF PEAK DOT 218H
BW: 84 lbs. Adj. 205D: 733 lbs. Adj. 365D: 1201 lbs.
YG: +33 BW: +4.4 WW: +38 YW: +72 Milk: +15 Mat: +34

73 PEAK DOT POWER UP 64S
MALE PDAR 64S 1337687 February 14 2006
RIVERBEND POWERLINE 0050 CONNEALY FRONTLINE
LEACHMAN BLACKBIRD 8060
HF POWER-UP 72N PAPA EQUATOR 2928
HF ROSEBUD 23G HF MISS ROSEBUD 15C
STEVENSON V AMBUSH 5430 V D A R AMBUSH 2478
MAYFLOWER OF PEAK DOT 578N STEVENSON RUBY 280E
MAYFLOWER OF PEAK DOT 538 SCA 03H OF IDEAL 1418
MAYFLOWER OF PEAK DOT 947H
BW: 86 lbs. Adj. 205D: 751 lbs. Adj. 365D: 1344 lbs.
YG: +42 BW: +5.8 WW: +43 YW: +85 Milk: +17 Mat: +39

76 PEAK DOT POWER UP 14S
MALE PDAR 14S 1337462 February 03 2006
RIVERBEND POWERLINE 0050 CONNEALY FRONTLINE
LEACHMAN BLACKBIRD 8060
HF POWER-UP 72N PAPA EQUATOR 2928
HF ROSEBUD 23G HF MISS ROSEBUD 15C
PEAK DOT STOCKMAN 12F 2TM STOCKMANS OSCAR 210
DIVINA OF PEAK DOT 911H PRINCESS OF PEAK DOT 209B
CEDAR CREEK ANNIE K 903A CEDAR CREEK DARKSTAR 130Y
JASON'S ANNIE K
BW: 98 lbs. Adj. 205D: 669 lbs. Adj. 365D: 1104 lbs.
YG: +32 BW: +7.3 WW: +31 YW: +62 Milk: +15 Mat: +31

**8 SONS
SELL!**



KDF POWERLINE 28N

CONNEALY FRONTLINE
RIVERBEND POWERLINE 0050
LEACHMAN BLACKBIRD 8060
KDF POWERLINE 28N
NEEDMORE PRIDE TRAVELLER 2F
LADY BONNIE OF K DEEN KY 75K
NEEDMORE BANDO PRIDE 18B

This bull has passed all expectations. His progeny will be among your favorites on sale day. They are all long and deep ribbed, with plenty of muscle and eye appeal and boast outstanding performance.

77 PEAK DOT POWER UP 42S

MALE PDAR 42S 1337669 February 10 2006
 RIVERBEND POWERLINE 0050 CONNEALY FRONTLINE
HF POWER-UP 72N LEACHMAN BLACKBIRD 8060
 HF ROSEBUD 23G PAPA EQUATOR 2928
 HF MISS ROSEBUD 15C
 S A R FAME 2089 S A F FAME
PENNY OF PEAK DOT 494N THREE TREES SKYMERE 57X7
 PENNY OF PEAK DOT 543K DOUBLE AA RITO 287'97
 PENNY OF PEAK DOT 541E
 BW: 80 lbs. Adj. 205D: 702 lbs. Adj. 365D: 1316 lbs.
 Y G: +35 BW: +3.9 WW: +36 YW: +71 Milk: +15 Mat: +33

78 PEAK DOT POWERLINE 202S

MALE PDAR 202S 1337730 May 12 2006
 RIVERBEND POWERLINE 0050 CONNEALY FRONTLINE
KDF POWERLINE 28N LEACHMAN BLACKBIRD 8060
 LADY BONNIE OF K DEEN KY 75 NEEDMOREPRIDE TRAVELLER 2F
 DYNALADYLYN OF NEEDMORE 24D
 ELLIOTT FORTUNE 16M STEVENSON FORTUNE 425C
ANNIE K OF PEAK DOT 799P DOUBLE AA SUSIE 295'00
 DOUBLE AA ANNIE K 365'01 DOUBLE AA BARDOLENE 8'98
 DOUBLE AA ANNIE K 516'99
 BW: 81 lbs. Adj. 205D: 848 lbs. Adj. 365D: 1466 lbs.
 YG: +20 BW: +4.2 WW: +37 YW: +56 Milk: +14 Mat: +32

79 PEAK DOT POWERLINE 191S

MALE PDAR 191S 1337694 April 28 2006
 RIVERBEND POWERLINE 0050 CONNEALY FRONTLINE
KDF POWERLINE 28N LEACHMAN BLACKBIRD 8060
 LADY BONNIE OF K DEEN KY 75 NEEDMORE PRIDE TRAVELLER 2F
 DYNALADYLYN OF NEEDMORE 24D
 HF MOST WANTED 46H HF WALKER 107E
QUEEN OF PEAK DOT 639N HFRF ROSEBUD 72F
 QUEEN OF PEAK DOT 306J PEAK DOT WALK-ON 51G
 QUEEN OF PEAK DOT 503E
 BW: 80 lbs. Adj. 205D: 854 lbs. Adj. 365D: 1542 lbs.
 Y G: +23 BW: +2.9 WW: +33 YW: +56 Milk: +16 Mat: +33

80 PEAK DOT POWERLINE 20S

MALE PDAR 20S 1337629 February 05 2006
 RIVERBEND POWERLINE 0050 CONNEALY FRONTLINE
KDF POWERLINE 28N LEACHMAN BLACKBIRD 8060
 LADY BONNIE OF K DEEN KY 75 NEEDMORE PRIDE TRAVELLER 2F
 DYNALADYLYN OF NEEDMORE 24D
 HF YOUNG GUN 139J GREENS PREMIUM 7578
JUNE OF PEAK DOT 264M R F PRINCESS BLACKCAP 259C
 CEDAR CREEK LADY 33B S V F RANCHERO
 CEDAR CREEK LADY
 BW: 88 lbs. Adj. 205D: 731 lbs. Adj. 365D: 1215 lbs.
 Y G: +22 BW: +3.4 WW: +31 YW: +53 Milk: +17 Mat: +33

81 PEAK DOT POWERLINE 194S

MALE PDAR 194S 1337731 April 30 2006
 RIVERBEND POWERLINE 0050 CONNEALY FRONTLINE
KDF POWERLINE 28N LEACHMAN BLACKBIRD 8060
 LADY BONNIE OF K DEEN KY 75 NEEDMORE PRIDE TRAVELLER 2F
 DYNALADYLYN OF NEEDMORE 24D
 PEAK DOT PANAMA 121G O S U PANAMA 4178
ANNIE K OF PEAK DOT 800P LADY OF PEAK DOT 346C
 DOUBLE AA ANNIE K 271'95 PEAK DOT BARDOLENE 43B
 DOUBLE AA ANNIE K 514'91
 BW: 82 lbs. Adj. 205D: 854 lbs. Adj. 365D: 1524 lbs.
 YG: +21 BW: +3.7 WW: +31 YW: +52 Milk: +14 Mat: +29

Wintering Bulls: Peak Dot will winter bulls for two dollars a day. Bulls will be semen tested before delivery in spring.

82 PEAK DOT POWERLINE 193S

MALE PDAR 193S 1337693 April 29 2006
 RIVERBEND POWERLINE 0050 CONNEALY FRONTLINE
KDF POWERLINE 28N LEACHMAN BLACKBIRD 8060
 LADY BONNIE OF K DEEN KY 75 NEEDMORE PRIDE TRAVELLER 2F
 DYNA LADYLYN OF NEEDMORE 24D
 S A V SAUGAHATCHEE 9374 LEACHMAN SAUGAHATCHEE 3000C
MIA OF PEAK DOT 637N S A V DOMINIQUE 5003
 MIA OF PEAK DOT 501E 2TM STOCKMANS OSCAR 210
 MIA OF PEAK DOT 41W
 BW: 80 lbs. Adj. 205D: 742 lbs. Adj. 365D: 1374 lbs.
 YG: +26 BW: +4.2 WW: +37 YW: +63 Milk: +14 Mat: +32

83 PEAK DOT POWERLINE 201S

MALE PDAR 201S 1337726 May 10 2006
 RIVERBEND POWERLINE 0050 CONNEALY FRONTLINE
KDF POWERLINE 28N LEACHMAN BLACKBIRD 8060
 LADY BONNIE OF K DEEN KY 75K NEEDMORE PRIDE TRAVELLER 2F
 DYNALADYLYN OF NEEDMORE 24D
 PEAK DOT PANAMA 121G O S U PANAMA 4178
QUEENMOTHER OF PEAKDOT 787P LADY OF PEAK DOT 346C
 QUEENMOTHER OF PEAKDOT 449D 2TM STOCKMANS OSCAR 210
 MIA OF PEAK DOT 251R
 BW: 77 lbs. Adj. 205D: 741 lbs. Adj. 365D: 1415 lbs.
 Y G: +22 BW: +3.2 WW: +31 YW: +52 Milk: +14 Mat: +29



SAR Fame 2089 Sire of lot 84

84 PEAK DOT FAME 89S

MALE PDAR 89S 1337626 February 27 2006
 S A F FAME MINERTS FORTUNE 2000
S A R FAME 2089 S A F ROYAL LASS 1027
 THREE TREES SKYMERE 57X7 LEACHMAN SAUGAHATCHEE
 MENGS MISS SKYMERE 57X
 S A R FAME 2089 S A F FAME
SUSIE OF PEAK DOT 258M THREE TREES SKYMERE 57X7
 WAYNE'S PRIDE OF 95 FREYS EXTRA PROFIT
 WAYNE'S PRIDE OF 86
 BW: 87 lbs. Adj. 205D: 703 lbs. Adj. 365D: 1260 lbs.
 YG: +20 BW: +3.6 WW: +33 YW: +53 Milk: +17 Mat: +34

155 Commercial Bred Heifers...

All the heifers in the sale are bred to calving ease Peak Dot bulls.
 View all heifers on video at www.peakdotranch.com



Dave Lane



Dave Lane with one of his Percherons



Predominant

David Lane has selected 80 of his top heifers out of his 325 head cow herd. These heifers are daughters of Peak Dot bulls. The heifers were exposed to 4 sons of SAV 004 Predominant 4438 that were purchased in the spring sale of 2007 at Peak Dot Ranch. Breeding season ran from June 20 to Sept.1. The heifers were vaccinated with Bovi-Shield Gold prior to breeding and have been ivomected prior to the sale. For more information call **David & Gail Lane (204) 842-3692 cell:(204)773-6544 or Kurt Lane (204) 842-5254 cell: (204) 773-0876.**



Heifers at Packets

Packet Brothers have 10 black angus heifers bred to a Predominant son they purchased out of the 2007 spring sale at Peak Dot. Heifers are vaccinated for blackleg and vaccinated with Preg-Guard 9. The bull was exposed from June 1 to July 30. Heifers were ultrasounded on September 23 and calving dates will be available sale day. For more information phone **Dexter Packet 306-472-5285 or Darcy Packet 306-543-7339.**



The Packets



Les Schick

LES SCHICK has 20 uniform angus heifers and 5 brockel face heifers. These ranch raised heifers excel in the traits that made the angus cow what she is today. They were exposed to Hobson sons purchased from Peak Dot Ranch from June 15th to July 30th. **For more information call Les at 306-475-2583.**



HOBSON



Grant Payant

PAYANT FARMS are bringing 45 gentle good doing ranch raised heifers that will be weighing 1200lbs on sale day. Heifers were vaccinated with Covxin-8. Grant Payant purchased all Prime Cut sons which he selected for calving ease and high weaning weights. 35 Heifers were exposed to bulls from June 1 to July 30, and 10 were exposed to bulls from August 1 to Sept 30. **For more information call Grant at 306-642-3001**



Prime Cut

For sale by private treaty 100 purebred angus cows out of the heart of the Peak Dot Ranch herd. Cows will be sorted into uniform groups of 25 and available for viewing November 16.

EMBRYOS FOR SALE
 visit www.peakdotranch.com to see donor cow photos and what embryos are available.



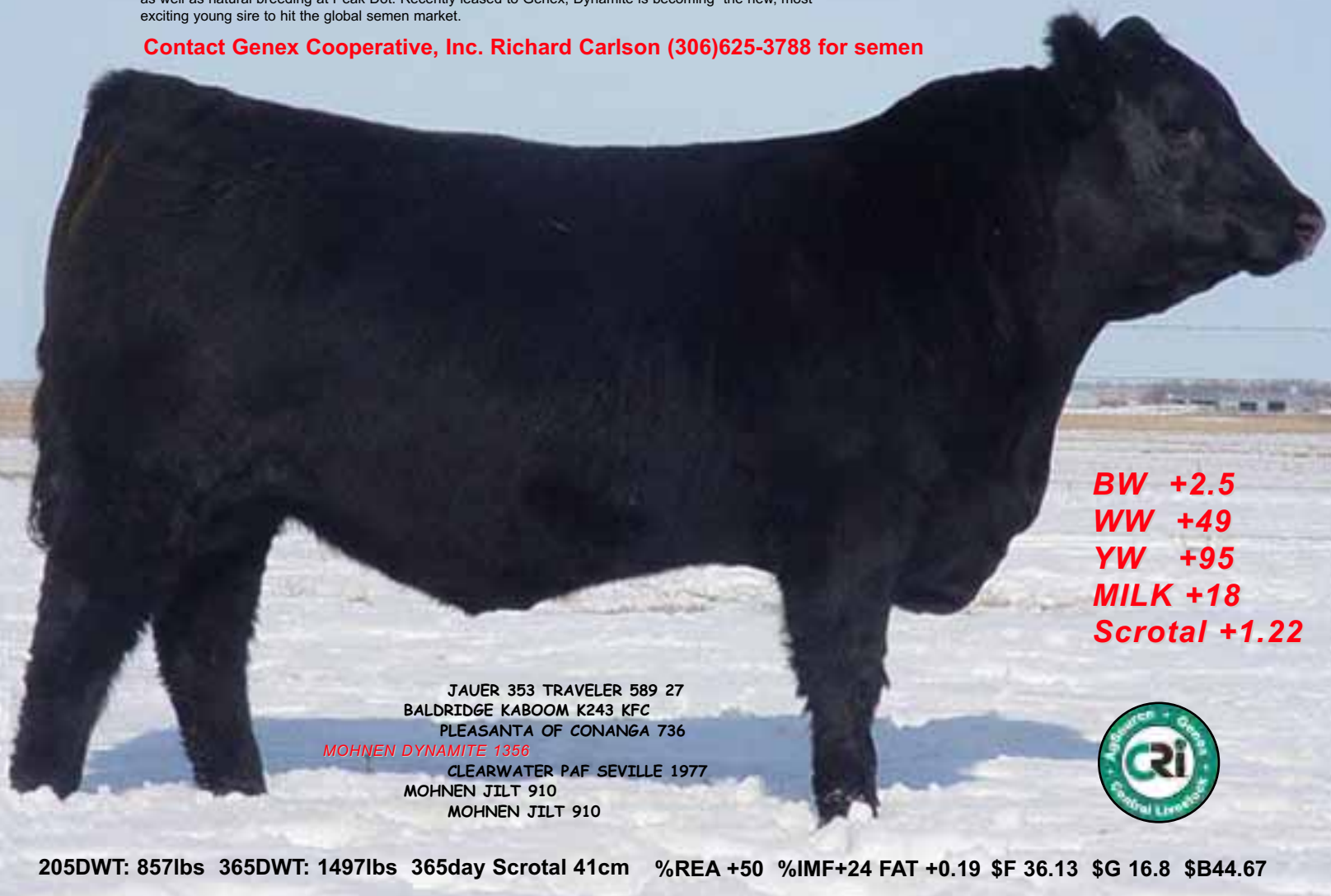
Donor cow Bardolia of Peak Dot 963H

New Herdsire...

MOHNEN DYNAMITE 1356

The Lot 1, \$39,000 top selling bull from the Mohnen Angus 2007 Production Sale at Platte, SD. sold to Peak Dot Ranch. We purchased this bull for his added performance, depth of body, do ability and great scrotal development. He has an excellent disposition and is all black hereford bull. He is sired by Baldrige Kaboom a bull that consistently sires attractive, thick made cattle that are easy to look at with great feet and leg structure. Dynamite's dam Mohnen Jilt 910 is solid black with an exceptional udder and long hip. She has generated over \$100,000 in progeny in the last two years. She serves in the Mohnen embryo donor program. She is also the dam of Genex sire Mohnen Day Ahead 144 and Mohnen Pioneer 1945. This past summer they're was a delegation of breeders from Australia that spent 20 days touring angus herds in the United States. At the end of their tour they held a meeting- they listed Mohnen Jilt 910 as one of the top 5 cows they had seen. Dynamite was one of the most heavily used sires this past summer through AI as well as natural breeding at Peak Dot. Recently leased to Genex, Dynamite is becoming the new, most exciting young sire to hit the global semen market.

Contact Genex Cooperative, Inc. Richard Carlson (306)625-3788 for semen



BW +2.5
WW +49
YW +95
MILK +18
Scrotal +1.22

JAUER 353 TRAVELER 589 27
BALDRIDGE KABOOM K243 KFC
PLEASANTA OF CONANGA 736
MOHNEN DYNAMITE 1356
CLEARWATER PAF SEVILLE 1977
MOHNEN JILT 910
MOHNEN JILT 910



205DWT: 857lbs 365DWT: 1497lbs 365day Scrotal 41cm %REA +50 %IMF+24 FAT +0.19 \$F 36.13 \$G 16.8 \$B44.67



Peak Dot Ranch Ltd.

ESTABLISHED IN 1950

Box 105, Wood Mountain, SK S0H 4L0

Terry Moneo Carson Moneo Clay Moneo Scott and Mia Turner
(306) 266-4303 (306)266-4414 (306)266-4411 (306)266-2056

Fax 266-4930 Email: peakdot@sasktel.net

www.peakdotranch.com