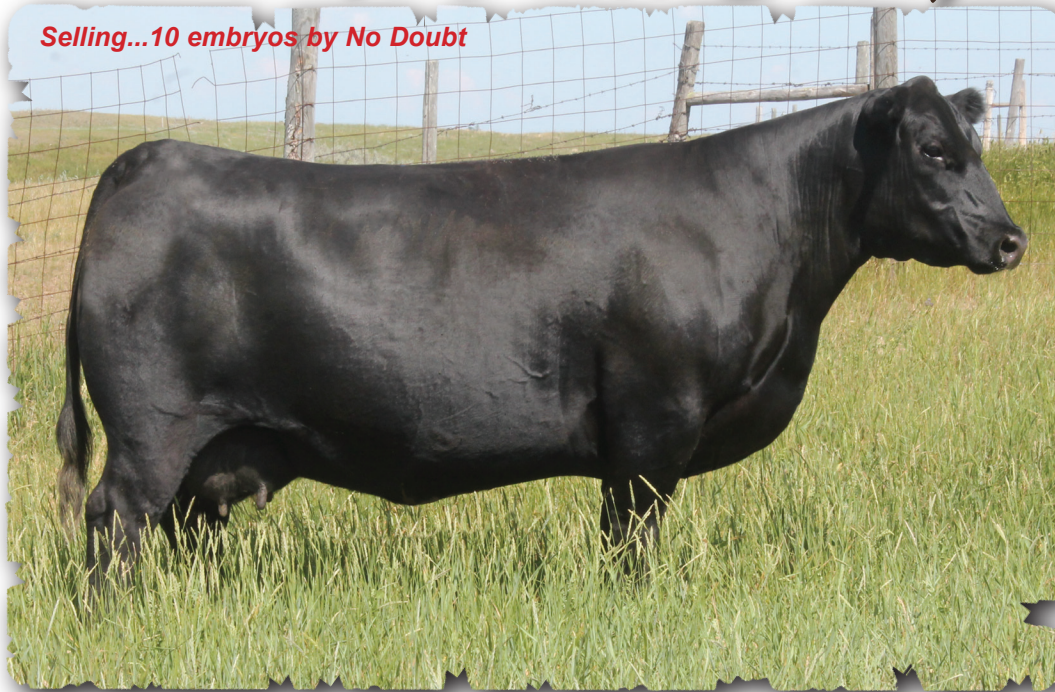


No Doubt Embryos ...

Selling...10 embryos by No Doubt



PEAK DOT DIVISION 86A embryos - LOT 202

Selling...10 embryos by No Doubt



LADY OF PEAK DOT 402U embryos - LOT 203



HOOVER NO DOUBT

Hoover No Doubt was the \$67,500 top-selling bull in the 2015 Hoover Angus Sale, and became the top-selling bull in the 90-year history at Hoover Angus! He was selected by Alta Genetics, Peak Dot Ranch, and Diamond J Angus.

No Doubt was a hunk that turned in an adjusted 1540 pound yearling weight, ratio 113 to be the #1 adjusted yearling weight bull in the 2015 Hoover sale! He also scanned a 3.91 IMF, ratio 108, and tied as the top scanning ribeye bull (among 81 yearlings) with a 17.3" ribeye, ratio 114! No Doubt is a superb disposition bull that has the style and eye appeal everyone likes. He is exceptionally stout, and has definitely put meat and muscle in his calves. No Doubt has superior foot shape, and his calves have excellent feet and legs and ideal body type.

His dam became one of the top valued cows in the breed in the fall of 2018.

Hoover No Doubt has become one of the most popular sought after sires in the Angus breed with a huge demand for semen. No Doubt semen sold at auction in early December for \$3000 a staw.

A half interest in the dam of No Doubt just recently sold for \$150,000 making her one of the top valued females to sell in 2018.

Excitement around No Doubt continues to build with Spruce Mountain Ranch, Colorado recently purchasing possession from Peak Dot this past fall.

**EMBRYOS ARE QUALIFIED
FOR
CANADA AND THE USA**

202 PEAK DOT DIVISION 86A	
FEMALE	PDAR 86A 1766888 February 23 2013
VISIONTOPLINE ROYAL STOCKMAN	GAMBLES ROYAL FLUSH
VISION UNANIMOUS 1418	LAGRAND PRIDE 7140
VISION EDELLA 665	BOYD ON TARGET 1083
	VISION EDELLA 337
S A V BULLETIN 7904	S A V NET WORTH 4200
DIVISION OF PEAK DOT 690X	CHAMPION HILL GEORGINA 2175
DIVISION OF PEAK DOT 964U	MOHNEN DYNAMITE 1356
	DIVISION OF PEAK DOT 764L
Sire.....BW:+3.7 WW: +80 YW: +145 Milk: +16	
Dam.....BW:+4.7 WW: +56 YW: +99 Milk: +21	

Peak Dot Division 86A is a very attractive deep made bodied cow with exceptional foot and udder quality. She consistently has produced stout made, attractive fronted progeny with every sire we have mated her with. The mating of Division 86A and No Doubt will no doubtly be the most exciting to date combining phenotype and pedigree and predictability.

Selling...10 embryos by No Doubt

203 LADY OF PEAK DOT 402U	
FEMALE	PDAR 402U 1461571 JANUARY 1 2008
SAV 8180 TRAVELER 004	SITZ TRAVELER 8180
SAV AUTOGRAPH 5204	BOYD FOREVER LADY 8003
SAV CHERYL 9030	BON VIEW BANDO 598
	SAV CHERYL 7188
PEAK DOT HOBSON 57N	STEVENSON BRUNO 6371
LADY OF PEAK DOT 431R	LADY OF PEAK DOT 558K
LADY OF PEAK DOT 542N	BASIN PRIME CUT 354K
	LADY OF PEAK DOT 782L
Sire.....BW:+3.7 WW: +80 YW: +145 Milk: +16	
Dam.....BW:-0.1 WW: +44 YW: +83 Milk: +30	

This proven donors embryos are being shared as an attraction for this event. She has an outstanding production record and is powerful in every dimension, phenotypically she is excellent, super fronted and long and deep with a well attached udder. Maternally she is as good as it gets going back to Lady of Peak Dot 782L the most influential cow in Peak Dot history with 68 progeny. The Lady cow family is the largest cow family at Peak Dot and we will continue to build it with Lady of Peak Dot 402U and several of her daughters. She is one of the lowest birth EPD cows in the herd with a birth EPD of -0.1. She has 14 progeny including the feature lot 81 bull in this sale.

Selling...10 embryos by No Doubt

No Doubt Embryos . . .

Selling...8 embryos by No Doubt



PEAK DOT LADY 13A embryos- LOT 204

204	PEAK DOT LADY 13A
FEMALE	PDAR 1716665 January 19 2013
RITO 707 OF IDEAL 3407 7075	R R RITO 707
S A V ELIMINATOR 9105	IDEAL 3407 OF 1418 076
S A V ABIGALE 5646	S A F 598 BANDO 5175
	S A V ABIGALE 6062
S A V 004 PREDOMINANT 4438	S A V 8180 TRAVELER 004
LADY OF PEAK DOT 574Y	S A V EMBLYNETTE 1182
LADY OF PEAK DOT 534M	BASIN PRIME CUT 354K
	LADY OF PEAK DOT 132A
Sire....BW:+3.7 WW: +80 YW: +145 Milk: +16.	
Dam...BW:+3.0 WW: +55 YW: +93 Milk: +26	

This beautiful brood cow has ideal body type, udder quality and fleshing-ability. Her combination of softness, depth and productivity is impressive. She comes from a long line of highly accomplished producers. Her grandam is a foundation donor with 29 progeny. Her gorgeous dam is among 10 look-alike full sisters we have in the herd sired by SAV 004 Predominant 4438.

Selling...10 embryos by No Doubt

205	PEAK DOT BARBARA 483A
FEMALE	PDAR 483A March 07 2013 1767499
CONNEALY FINAL PRODUCT	CONNEALY PRODUCT 568
MCATL PURE PRODUCT 903-55	EBONISTA OF CONANGA 471
M A ESTA 55-252	WAR ALLIANCE 9126 6006
	R A ESTA R243
S A V 004 CAPACITY 5234	S A V 8180 TRAVELER 004
BARBARA OF PEAK DOT 477U	S A V ERICA 1141
BARBARA OF PEAK DOT 535K	HF MOST WANTED 46H
	BARBARA OF PEAK DOT 445D
Sire.....BW:+3.7 WW: +80 YW: +145 Milk: +16	
Dam....BW: +1.1 WW: +48 YW: +81 Milk: +29	

Barbara of Peak Dot 483A is a stunning donor female that is level hipped with a perfect udder. She has produced two daughters which we have kept and three sons that have been featured and sold in past sales. I believe the mating of Barbara of Peak Dot 483A to No Doubt will be the perfect blending of power, maternal and phenotype.

Selling...10 embryos by No Doubt

Selling...8 embryos by No Doubt



PEAK DOT BARBARA 483A embryos - LOT 205